

EXAMGOOD

QUESTION & ANSWER

Exam Good provides update free of charge in one year!

Accurate study guides
High passing rate!

<http://www.examgood.com>

Exam : **070-323**

Title : Administering Office 365

Version : Demo

1.DRAG DROP

You are the administrator for a company named Contoso, Ltd. Contoso has a subscription to Office 365 for midsize business and enterprises and has 200 Microsoft Lync Online users. Contoso works with a partner company named Fabrikam, Inc. All users at Fabrikam use Windows live. You need to implement desktop sharing between all of the Contoso users and all of the Fabrikam users, except for the users in the Contoso finance department. The Contoso users must be prevented from using Lync Online to communicate with any other external users. What should you do? To answer, move the appropriate actions from the list of actions to the answer area and arrange them in the correct order.

Actions	Answer Area
For each finance user, disable public IM connectivity.	
For each finance user, run the Set-MSOLUser cmdlet.	
From Windows PowerShell, create a new hosting provider.	
From the Lync Control Panel, enable public IM connectivity.	
Block domain federation with all domains except for those specified in the Lync Control Panel.	
Enable domain federation with all domains except for those specified in the Lync Control Panel.	

Answer:

Actions	Answer Area
	Block domain federation with all domains except for those specified in the Lync Control Panel.
	From the Lync Control Panel, enable public IM connectivity.
For each finance user, run the Set-MSOLUser cmdlet.	
From Windows PowerShell, create a new hosting provider.	
	For each finance user, disable public IM connectivity.
Enable domain federation with all domains except for those specified in the Lync Control Panel.	

2.Your company has a main office and a branch office. Both offices are directly connected to the Internet. The branch office connection to the Internet has limited bandwidth. The company deploys Microsoft Lync Online. You need to ensure that users in the branch office can only use instant messaging (IM) while using Lync Online. The users must be prevented from connecting to audio or video conferences. What should you do.?

- A. On the firewall at the branch office, block all of the outbound traffic on port 5061.
- B. From the Office 365 portal, modify the user properties of each user in the branch office.
- C. From the Office 365 portal, configure the license settings of each user in the branch office.
- D. Deploy only the Lync 2010 Attendee client to all of the users in the branch office.

Answer: B

3.Your company has 100 user mailboxes. The company purchases a subscription to Office 365 for professionals and small businesses. You need to enable the Litigation Hold feature for each mailbox. What should you do first?

- A. Purchase a subscription to Office 365 for midsize business and enterprises.
- B. Enable audit logging for all of the mailboxes.
- C. Modify the default retention policy.
- D. Create a service request.

Answer: A

4.DRAG DROP

Your company has an Office 365 subscription. The company updates the email security policy to include the following requirements:

- All email messages older than two years must be deleted automatically unless a user chooses to retain the message for a longer period.
- All email messages sent to and from a distribution group named Legal must be stored in a single mailbox for five years.
- All email messages sent to the Internet from the company must contain a disclaimer.

You need to configure Office 365 to meet the security policy requirements.

Which features should you configure? To answer, drag the appropriate feature to the correct requirement in the answer area.

Features	Answer Area
a journal rule	Feature All email messages older than two years must be deleted automatically unless a user chooses to retain the message for a longer period.
a litigation hold	Feature All email messages sent to and from a distribution group named Legal must be stored in a single mailbox for five years.
a retention policy	Feature All email messages sent to the Internet from the company must contain a disclaimer.
a transport rule	
delivery reports	

Answer:

5.Your company has an Office 365 subscription. You need to add the label "External" to the subject line of each email message received by your organization from an external sender. What should you do?

- A. From the Exchange Control Panel, add a MailTip.
- B. From the Forefront Online Protection Administration Center, set the footer for outbound email.
- C. Run the Enable-InboxRule cmdlet.
- D. From the Exchange Control Panel, run the New Rule wizard.

Answer: D

6.You are the administrator for a company named Tailspin Toys. The company uses the tailspintoys.com SMTP domain. All mailboxes are hosted on Office 365. From the Internet, customers send warranty questions to Tailspin Toys by sending an email message to a shared mailbox named Warranty. The Warranty mailbox has the warranty@tailspintoys.com SMTP address. The service manager reports that

many email orders sent to warranty@tailspintoys.com are identified as spam. You need to ensure that all of the messages sent by the customers arrive in the Warranty mailbox. What should you do?

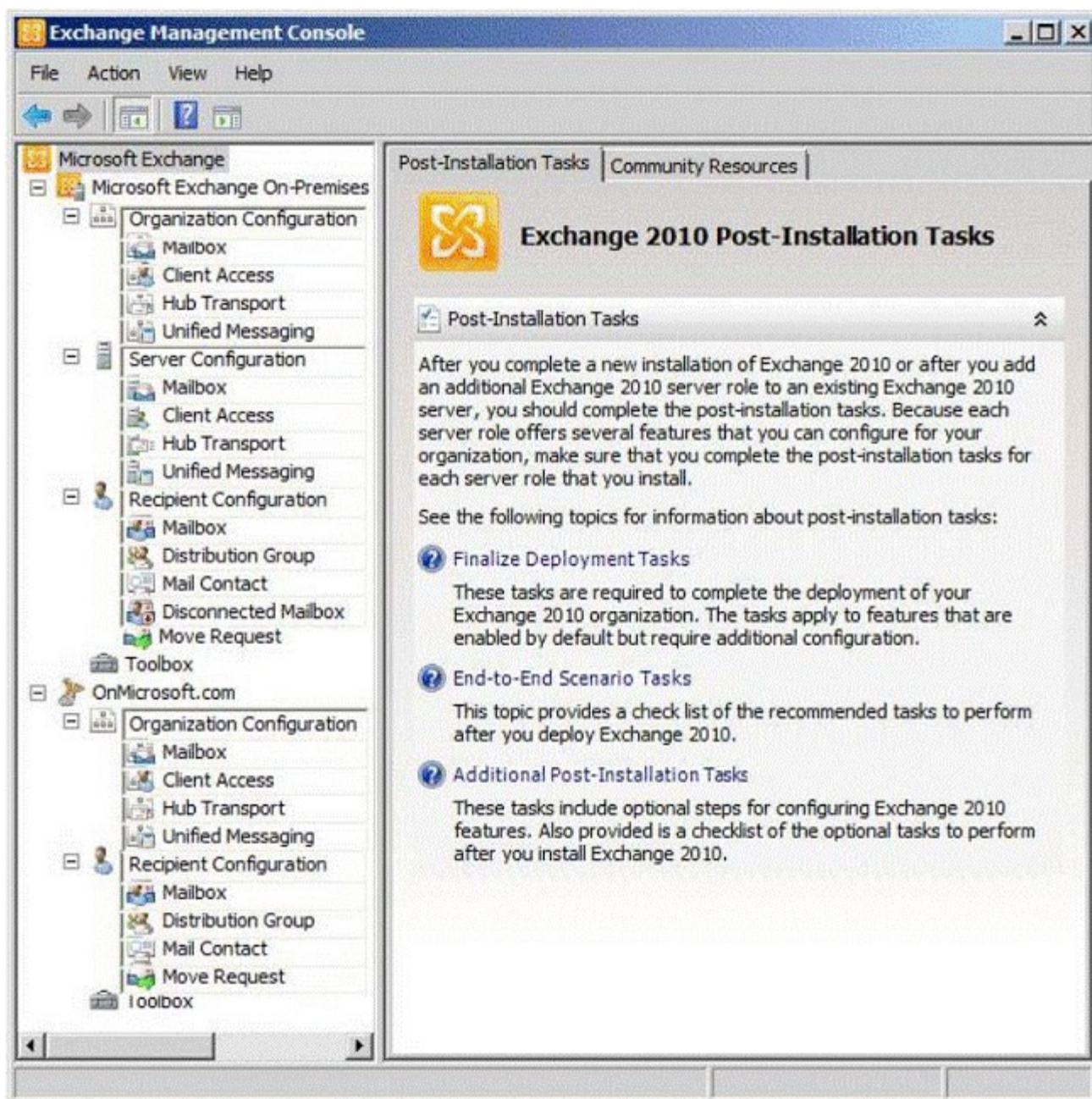
- A. From the Forefront Online Protection Administration Center, enable Directory-Based Edge Blocking.
- B. From the Forefront Online Protection Administration Center, create a new policy rule.
- C. From Windows PowerShell, run the New TransportRule cmdlet and specify the - exceptifheadercontainswords parameter.
- D. From Windows PowerShell, run the Set-ContentFilterConfig cmdlet and specify the - bypassedrecipients parameter.

Answer: D

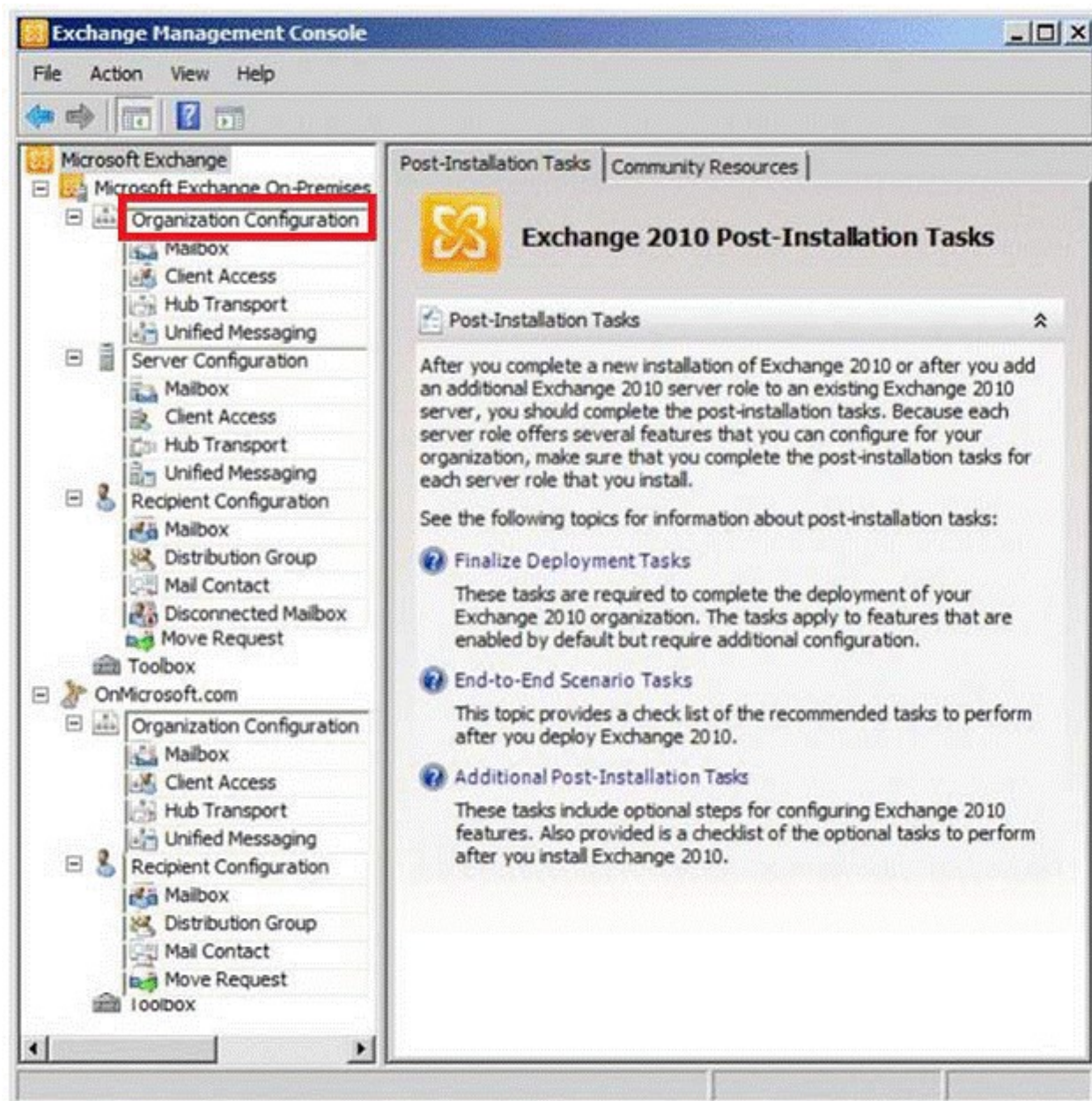
7.HOTSPOT

You are implementing a hybrid deployment of Office 365. You discover that users who have migrated to Office 365 cannot view the free/busy information of users who are hosted on the Microsoft Exchange Server on-premises environment. The Exchange on-premises users can view the free/busy information of all users. You need to ensure that the users who have Office 365 mailboxes can view the free/busy information of users who have Exchange on premises mailboxes.

Which node should you modify from the Exchange Management Console? To answer, select the appropriate node in the answer area.



Answer:



8.HOTSPOT

You are planning a hybrid deployment of Office 365. You configure all email sent to the company from the Internet to be sent to Office 365. You need to ensure that all of the email sent to recipients hosted on the Microsoft Exchange Server on-premises environment is routed to the internal network.

What should you modify from the Forefront Online Protection Administration Center? To answer, select the appropriate option in the answer area.

Company Settings

Preferences

Language: English
Time zone: UTC

Service Subscriptions

Embedded Filtering

Channel: Exchange Online
Service Plan: Office 365 Enterprises
Status: Provisioned
Start date: 7/2/2011
Seat count: 1
Total seat count: 0

Contacts

Ensure your contact information is correct to receive prompt service.

Online.onmicrosoft.com

Mail Delivery Settings

Mail Server Multi-SMTP Profiles:

Outbound Mail Server IP Addresses:

Connectors

Inbound Connectors:

Outbound Connectors:

Service Settings

Filtering Settings:

Tasks

Security

Limit access to Web applications to a set of allowed IP addresses.

Create a custom password policy.

Answer:

Company Settings

Preferences

Language: English
Time zone: UTC

Service Subscriptions

Embedded Filtering

Channel: Exchange Online
Service Plan: Office 365 Enterprises
Status: Provisioned
Start date: 7/2/2011
Seat count: 1
Total seat count: 0

Contacts

Ensure your contact information is correct to receive prompt service.

Online.onmicrosoft.com

Mail Delivery Settings

Mail Server Multi-SMTP Profiles:

Outbound Mail Server IP Addresses:

Connectors

Inbound Connectors:

Outbound Connectors:

Service Settings

Filtering Settings:

Tasks

Security

Limit access to Web applications to a set of allowed IP addresses.

Create a custom password policy.

9. Your company has an Office 365 subscription. You create a new retention policy that contains several retention tags. A user named Test5 has a client computer that runs Microsoft Office Outlook 2007. You install Microsoft Outlook 2010 on the client computer of Test5. Test5 reports that the new retention tags are unavailable from Outlook 2010. You verify that other users can use the new retention tags. You need to ensure that the new retention tags are available to Test5 from Outlook 2010. What should you do?

- A. Instruct Test5 to repair the Outlook profile.
- B. Modify the retention policy tags.
- C. Run the Set-Mailbox cmdlet.
- D. Force directory synchronization.

Answer: A

10. Your company has a subscription to Office 365 for midsize business and enterprises. The company uses Microsoft Lync Online. You need to open ports on the network firewall to enable all of the features of Lync Online.

Which port or ports should you open? (Each correct answer presents part of the solution. Choose all that apply.)

- A. inbound TCP 443
- B. outbound TCP 5061
- C. outbound UDP 3478
- D. outbound TCP 443
- E. outbound UDP 50000 to outbound UDP 59999
- F. inbound TCP 8080

Answer: C, D, E

11. Your company has a hybrid deployment of Office 365. You need to create a group. The group must have the following characteristics:

- Group properties are synchronized automatically.
- Group members have the ability to control which users can send email messages to the group.

What should you do?

- A. Create a distribution group and configure the Mail Flow Settings.
- B. Create a dynamic distribution group.
- C. Create a new role group.
- D. Create a distribution group and configure the Membership Approval settings.

Answer: A

12. Your company has a hybrid deployment of Office 365. You need to verify whether free/busy information sharing with external users is configured.

Which Windows PowerShell cmdlet should you use?

- A. Test-OutlookConnectivity
- B. Test-FederationTrust
- C. Get-OrganizationRelationship
- D. Get-MSOLDomainFederationSettings

Answer: C

13. Your company has an Office 365 subscription. A user named User1 has a mailbox. You need to ensure that all of the email messages sent and received by User1 are accessible to the audit department for 60 days, even if User1 permanently deletes the messages. What should you do?

- A. Run the Set-MailboxDatabase cmdlet and specify the –deleteditemretention parameter.
- B. Run the Set-Mailbox cmdlet and specify the –litigationholdenabled parameter.
- C. Run the Set-Mailbox cmdlet and specify the –singleitemrecoveryenabled parameter.
- D. Run the Set-MailboxDatabase cmdlet and specify the –eventhistoryretentionperiod parameter.

Answer: B

14. Your company has a Microsoft Exchange Server 2003 organization. Users access their mailbox by using RPC over HTTP and Exchange ActiveSync. You purchase an Office 365 subscription. From the Office 365 portal, you create and verify the accepted domain of the company. From the Exchange Control Panel, you attempt to migrate all of the mailboxes to Microsoft Exchange Online and you receive an error message indicating that the remote server is unavailable. You need to identify what prevents the mailboxes from migrating.

Which tool should you use?

- A. the Microsoft Remote Connectivity Analyzer
- B. the Exchange Server Deployment Assistant
- C. the Office 365 Deployment Readiness Tool
- D. the Microsoft Online Services Directory Synchronization Configuration Wizard

Answer: A

15. Your company uses Office 365. You need to prevent users from initiating remote wipes of mobile devices by using the Office 365 portal.

What should you modify?

- A. the Outlook Web App mailbox policy
- B. the Exchange ActiveSync device policy
- C. the default role assignment policy
- D. the Exchange ActiveSync Access settings

Answer: B