

EXAMGOOD

QUESTION & ANSWER

Exam Good provides update free of charge in one year!

Accurate study guides
High passing rate!

<http://www.examgood.com>

Exam : 1Y0-252

**Title : MetaFrame? Presentation
Server 3.0: Troubleshooting
Enterprise Environment**

Version : DEMO

1.Which three symptoms can occur if the required MetaFrame Presentation Server related ports are not open in an environment in which clients connect to Program Neighborhood over the WAN? (Choose three.)

- A.Applications lose functionality.
- B.Applications do not enumerate.
- C.Users are not be able to authenticate.
- D.Users are unable to connect to the server.
- E.Users are unable to launch published applications.

Correct:B D E

2.Scenario: Several users in the New York office have reported that they cannot connect to the farm through the clustered Web Interface servers this morning. No changes have been made to Active Directory or the Presentation Server Console for several days. What is most likely the issue?

- A.WAN link
- B.Active Directory
- C.Web Interface server failure
- D.MetaFrame Presentation Server Client version

Correct:A

3.When Web Interface is deployed without Secure Gateway, which port must remain open for Session Reliability to function?

- A.Port 80
- B.Port 1494
- C.Port 2598
- D.Port 2512

Correct:C

4.Scenario: At KellCom, Inc. users sometimes complain that they are not able to enumerate applications. Users access published applications through the Program Neighborhood Application Set. Program Neighborhood was installed and configured by the users. Which two options can be used to conduct an investigation of these symptoms? (Choose two.)

- A.DSCHECK
- B.QUERYDS
- C.Presentation Server Console
- D.Program Neighborhood settings

Correct:C D

5.Scenario: A temporary telecommuter in Toronto reports that she frequently experiences intermittent session drops when connected through the Secure Gateway to applications published on the MetaFrame Presentation Server. When querying her for information, you learn that she is using version 6.00 of the full Program Neighborhood Client. You know that network-based enhancements that improve client connectivity were made in the 6.20 version but want her to upgrade to at least the 7. x version. She cannot load any software on this Windows 2000 Professional computer because she is dangerously low on hard drive space. What is the recommended action?

- A.Upgrade the full Program Neighborhood Client which replaces only existing files.
- B.Implement the latest version of the Client for Java so that only a Java applet is installed.
- C.Implement the latest version of the Client for Web so that only the core files are installed.

D.Upgrade the current Client version with the Program Neighborhood Agent version so that only the necessary files are replaced.

Correct:B

6.Which requirement distinguishes network printing from client printing?

- A.Network printing requires the use of a print server.
- B.Network printing requires Windows printer sharing.
- C.Network printing requires that printers be defined on the server and not the client.
- D.Network printing requires that the printers appear in the Printer folders of the client and the server.

Correct:A

7.Scenario: In an environment in which MetaFrame Presentation Server 3.0 is deployed on Windows 2003 servers, a company uses an custom built application for their accounting department. LAN users create their ICA sessions with the following settings: Use data compression: enabled Sound: disabled Window Colors: True Color (24 Bit) Screen Size: 1024*768 The print preview document of the custom application is black. This application calls WINWORD.EXE when opening print preview. The print preview window within Word is also black. After consulting with application developers, users have been told that printing for this application and print preview will fail with high color depths. How can this issue be resolved?

- A.Update your print drivers.
- B.Change the color depth on all client machines.
- C.Change the color depth for ICA sessions to 256 colors.
- D.Change the color depth on the server running MetaFrame Presentation Server 3.0.

Correct:C

8.Scenario: KellCorp, Inc has several roaming users who may need to disconnect quickly depending on their location and distance away from office. The help desk has received several complaints that if a session was disconnected while printing, the print spooler hangs. Using the Printer Management properties in the Presentation Server Console. which option corrects this issue?

- A.Reset spooler services at logon.
- B.Use Universal Printer Drivers only.
- C.Delete the pending jobs at each logout.
- D.Update printer properties at each logon.

Correct:C

9.Scenario: Your network printer is on the LAN to the server. If you want to optimize speed and performance, you should enable the policy: Send through client device to printer. Is this statement true or false?

- A.True
- B.False

Correct:B

10.Scenario: Within an ICA session you only want to map your users' locally attached printer. The requirement specifies auto-creating only the local client printers connected directly to the client device through an LPT, COM, USB, or other local port. What course of action is required?

- A.Add WAN users to power printer user group.
- B.Apply the appropriate settings through the IMA configuration tool.
- C.Replicate the printer drivers on your server running MetaFrame Presentation Server 3.0.

D.Apply a MetaFrame Presentation Server 3.0 policy to users to Auto-create client printers at logon for local (non-network) client printers only.

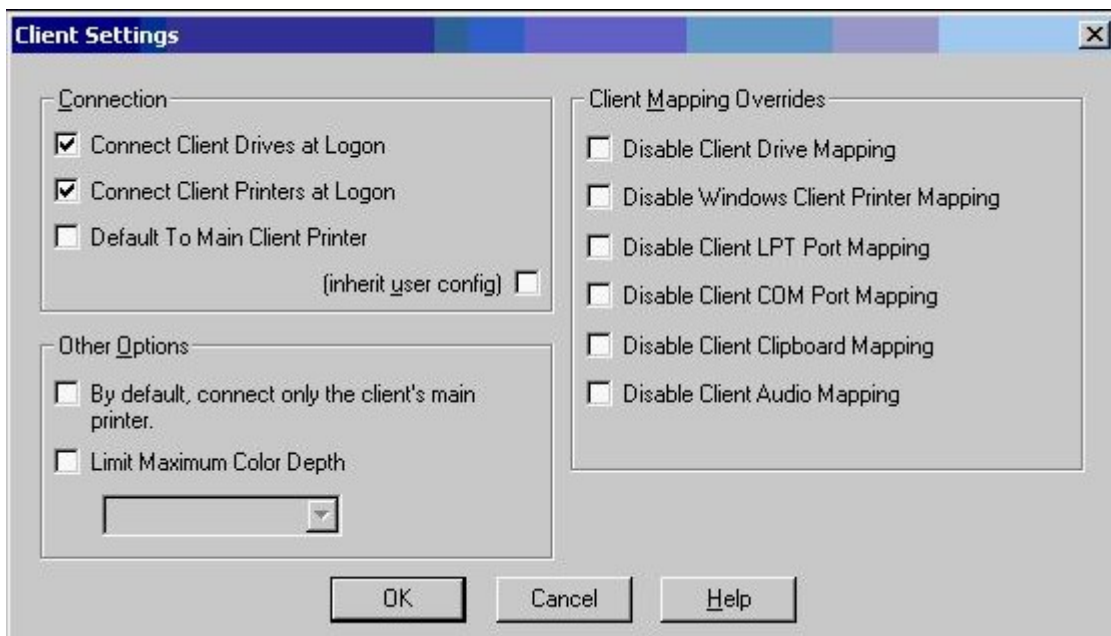
Correct:D

11.Which printer type requires that print queues be defined on a print server?

- A.Local printer
- B.Client printer
- C.Server printer
- D.Network printer

Correct:D

12.Scenario: For the accounting department, the default printer for an ICA session needs to be a network printer. That printer is configured as the default on the workstation. When a user logs on, the wrong printer appears by default. Click on the Exhibit button to view the client settings in the Citrix Connection Configuration utility. Which option should be selected to correct the issue described in the scenario?



- A.I nherit user config
- B.Default to Main Client Printer
- C.Disable Windows Client Printer Mapping
- D.By default, connect only the client's main printer

Correct:B

13.In order to enable auto-creation of printers, in which two locations must rights be assigned to the user? (Choose two.)

- A.Program Neighborhood
- B.Server Operating system
- C.Client connection settings
- D.MetaFrame Access Suite Console

Correct:B C

14.Which statement is true about auto-creation of printers?

- A.The printing queue is decided by the print server.

- B.Printing rights can only be assigned by the operating system.
- C.When printers are created at session initiation, printers can be created either synchronously or asynchronously.
- D.In a MetaFrame environment, the proper driver is automatically selected regardless of the client operating system.

Correct:C

15.Scenario: At a marketing company, Citrix has always been used to allow remote and mobile workforce access to applications. Recently the MetaFrame Presentation Server 3.0 implementation was rolled out to a larger group of users as a pilot to test usability for all employees. Users access their applications in this environment using the Web Interface. Complaints regarding long logon times are received daily. You have been asked to investigate the problem. After ruling out other causes, you launch the Presentation Server Console and view the Printer Management Properties. Click the Exhibit button to view the Settings. What are three possible causes of the slow logons in this environment? (Choose three.)

The screenshot shows the 'Printers' console with two main sections: 'Auto-Created Client Printers' and 'Auto-Created Network Printers'.

Auto-Created Client Printers:

- ☒ Auto-create client printers when user logs on
 - ☒ Update printer properties at each logon
 - ☐ Inherit client printer's setting for keeping printed documents.
 - ☐ Delete pending print jobs at logout
 - ☐ Always create client network printers as client printers
- Auto-Create these client print devices:
 - ☐ Default client printer only
 - ☐ Local (non-network) client printers only
 - ☒ All client printers
 - ☐ Use connection settings for each server

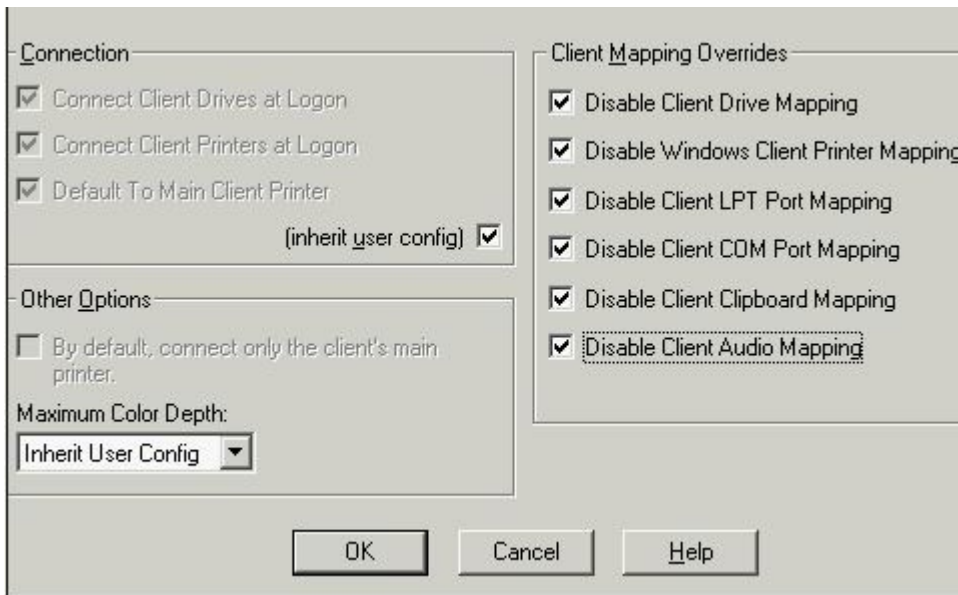
Auto-Created Network Printers:

- ☒ Update printer properties at each logon

- A."Auto-Creating Client Printers when user logs on" is enabled.
- B."Auto-creation for all printers" is disabled for certain applications.
- C."Inherit Printer's setting for keeping printing documents" is enabled.
- D."Update printer properties at each logon" is enabled for auto-created client printers.
- E."Update printer properties at each logon" is enabled for auto-created network printers.

Correct:A D E

16.Scenario: Users complain that they are unable to see their COM print devices from within their sessions. You launch the Citrix Connection Configuration Utility and view the Client Settings to ensure that all virtual channels needed for COM printing are enabled. Click on the Exhibit button to view the settings. Which setting must be deselected to enable the virtual channel?



- A.Enable COM Port Mapping
- B.Disable COM Port Mapping
- C.Enable Client Drive Mapping
- D.Disable Client Drive Mapping

Correct:B

17.Scenario: After importing a print server, users still cannot see the newly-added network printers. Which two steps would you take to troubleshoot this issue? (Choose two.)

- A.Reboot the print server.
- B.Delete the imported print server and reimport it.
- C.Delete the network printer and recreate it on the print server.
- D.Select "Update printer and driver information" in the Printer Management options.

Correct:B D

18.Scenario: Users connecting directly to the MetaFrame Presentation Server 3.0 desktop are able to print to their auto-created printers. When the same users try to print from their published applications, they cannot see their auto-created printers. The MetaFrame Administrator suspects that this is due to synchronous processing of printer auto-creation for published applications. How can you disable synchronous auto-creation of printers for published applications?

- A.Disable the option in Server Properties.
- B.Disable the option in Citrix Connection Configuration.
- C.Disable the option in Printer Properties in Presentation Server Console.
- D.Disable the option in Application properties in Presentation Server Console.

Correct:D

19.Which type of certificate must be installed on a client device in order to connect to the enterprise environment through Secure Gateway?

- A.Root certificate
- B.Client certificate
- C.Server certificate
- D.Intermediate certificate

Correct:A

20.Scenario: A MetaFrame Administrator is setting up a new server to run the Secure Gateway Service in order to support the growing number of users requiring secure, remote access. Upon configuration of the Secure Gateway, the administrator receives the following error message :

"Certificate is unusable." What is the likely cause of this issue?

- A.The certificate does not contain the private key.
- B.The server does not have the appropriate root certificate.
- C.The "Issued To" field of the certificate is NOT the FQDN name of the server.
- D.Two different server certificates are installed on the server running the Secure Gateway service.

Correct:A