

# EXAMGOOD

## QUESTION & ANSWER

Exam Good provides update free of charge in one year!

Accurate study guides  
High passing rate!

<http://www.examgood.com>

**Exam** : **3302**

**Title** : Avaya Contact Center  
Control Manager  
Implementation and  
Maintenance Exam

**Version** : Demo

1.What are three advantages of the Audit Server? (Choose three.)

- A. the ability to rollback the CM administration
- B. the ability to restart the License, Provisioning, and Synchronizer services in Windows in event of a failure
- C. the ability to schedule delayed saves during maintenance hours
- D. ability to provide a Security Firewall to Avaya Contact Center Control Manager (ACCCM)
- E. auditing to a single field level
- F. unlimited database entries

**Answer:** A,E,F

2.You have Installed Avaya Contact Center Control Manager (ACCCM) and you need to synchronize with the Communication Manager (CM) for the first time.

Which statement is true regarding the Synchronizer?

- A. The synchronizer can be used for initial data migration only.
- B. Only the initial synchronization will be done through the Web interface.
- C. The Synchronizer can only be used as a sync service that synchronizes information on a daily basis.
- D. Only the initial synchronization will be done from the Synchronizer windows application.

**Answer:** C

3.A customer is installing Avaya Contact Center Control Manager (ACCCM) with two locations and two Communication Managers (CM). The customer requires that the ACCCM controls the number ranges that are allowed to be configured for extensions on each CM. Location 1 will be allowed extensions 1000-1999, and Location 2 will be allowed extensions 2000-2999.

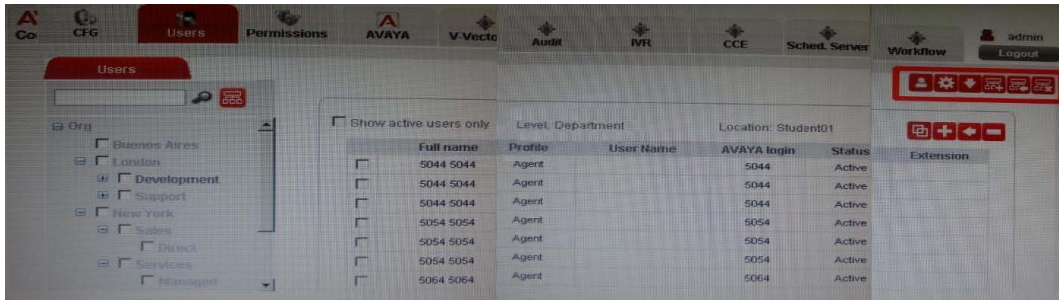
Using ACCCM, how can this be configured.?

- A. Add two dial plans in ACCCM. Dial Plan 1 would be configured for Extensions Range 1000-1999, Range Management enabled. Dial Plan 2 would be configured for Extensions Range 2000-2999, Range Management enabled. Dial Plan 1 is assigned to Location 1 and Dial Plan 2 is assigned to Location 2.
- B. Add two dial plans in ACCCM. Dial Plan 1 would be configured for Extensions Range 1000-1999, In Range enabled. Dial Plan 2 would be configured for Extensions Range 2000-2999, In Range enabled. Dial Plan 1 is assigned to Location 1 and Dial Plan 2 is assigned to Location 2.
- C. Add one dial plan in ACCCM. The Dial Plan would be configured for Extensions Range 1000-2999, Range Management enabled. The Dial Plan is assigned to Location 1 and to Location 2.
- D. Add one dial plan in ACCCM. The Dial Plan would be configured for Extensions Range 1000-2999, In Range enabled. The Dial Plan is assigned to Location 1 and to Location 2.

**Answer:** B

4.The Avaya Contact Center Control Manager (ACCCM) Web UI is responsible for the ACCCM Admin Web interface. There are multiple functional buttons and action bars available on each tab. The exhibit depicts the Users tab.

What is the section outlined in red in the illustration?



- A. Main details area
- B. Organization Chart action bar
- C. Quick Search
- D. User/agent action bar

**Answer: D**

5. A customer plans to integrate Avaya Contact Center Control Manager (ACCCM) with Active Directory. Which statement describes the ACCCM requirement that is mandatory for connectivity?

- A. The ACCCM server must be a member of the domain or a trusted domain.
- B. The LDAP Port must be 636.
- C. Provisioning server must run with Administrative Domain Account.
- D. Windows server must be 2008 R2 64-bit.

**Answer: A**