

EXAMGOOD

QUESTION & ANSWER

Exam Good provides update free of charge in one year!

Accurate study guides
High passing rate!

<http://www.examgood.com>

Exam : 50-708

**Title : SUSE Linux Enterprise
Desktop 10 Administration**

Version : Demo

1.What GID number is assigned to system groups?

- A.GID 0
- B.GID 1 to 99
- C.GID 100 to 199
- D.GID 200 to 299
- E.GID 300 and above

Answer:B

2.When a user submits a print job, which directory contains the actual data to print?

- A./etc/cups/
- B./proc/cups/
- C./home/cups/
- D./var/spool/cups/
- E./srv/spool/cups/

Answer:D

3.What is the command to rename a file on your SLED 10 computer?

- A.rn
- B.mv
- C.ren
- D.move
- E.rename

Answer:B

4.Which keystroke switches the vi editor from insert mode back to command mode?

- A.\$
- B.#
- C.:
- D.>
- E.~
- F.Esc

Answer:F

5.When booting up a Linux computer, which loads the kernel and the initrd to memory?

- A.init
- B.BIOS
- C.Kernel
- D.initramfs
- E.Boot manager

Answer:E

6.There are several versions of grep in your system. You would like to find out which grep command is being used when you run that command without specifying a path. Which command will provide you this information?

- A.grep
- B.man grep
- C.list grep
- D.find grep
- E.which grep

Answer:E

7.Which directory allows you see which services are loaded in runlevel 5?

- A./var/init/rc5/
- B./sys/init/rc5/
- C./etc/init.d/rc5.d/
- D./boot/inittab/rc5/
- E./root/init.d/rc5.d/

Answer:C

8.You are logged is as user wparker and want to change the priority of process 1824. It is currently at a nice value of 5. Being logged in as wparker, which command will change the priority?

- A.renice -10 1824
- B.renice -1 1824
- C.renice 0 1824
- D.renice 3 1824
- E.renice 7 1824
- F.Only root can change the nice value of a process.

Answer:E

9.What is the yast command to enter the software installation module from the command line?

- A.yast sw_single
- B.yast /sw_single
- C.yast -l sw_single
- D.yast -i sw_single
- E.yast --i sw_single

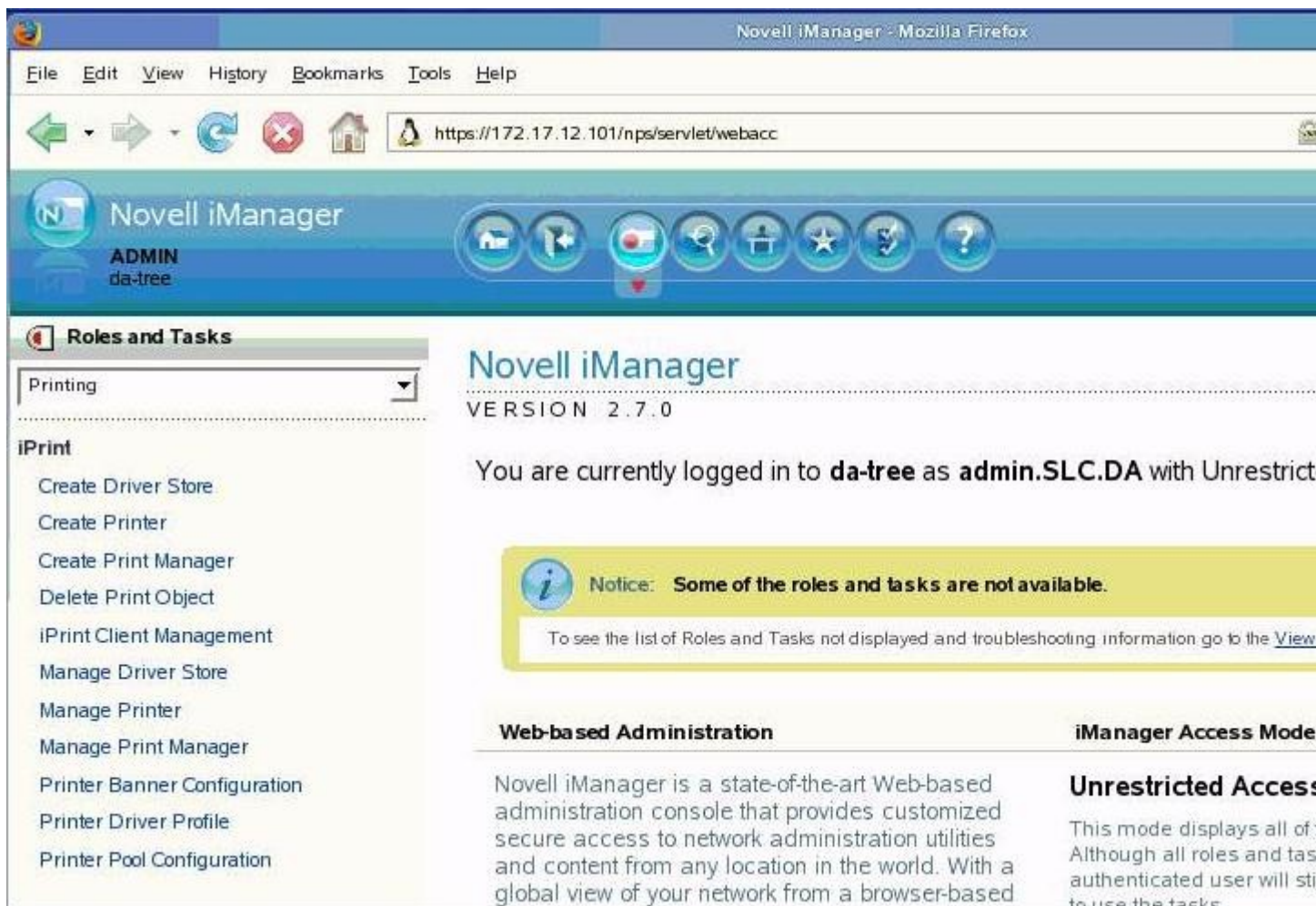
Answer:A

10.User authentication for Active Directory users into a Linux machine is provided by which module?

- A.pam_unix2
- B.nss_compat
- C.nss_winbind
- D.pam_winbind
- E.Ticket granting ticket (TGT)

Answer:D

11.Click the Point-and-Click button to begin. Click on the icon or option that will allow you to delete a Novell iPrint print job.



Answer:

12.What is the syntax to uninstall a software package?

- A.rpm -a package_name
- B.rpm -d package_name
- C.rpm -e package_name
- D.rpm -r package_name
- E.rpm -u package_name

Answer:C

13.Which will restart the Novell Client tray application from the command line?

- A./opt/novell/ncl/bin/tray
- B./opt/novell/ncl/bin/n_tray
- C./opt/novell/ncl/bin/ncl_tray
- D./opt/novell/ncl/bin/novell_tray
- E./opt/novell/ncl/bin/nclient_tray

Answer:C

14.Which command shows who is currently on the system and their processes?

- A.w
- B.who
- C.last

- D.finger
- E.lastlog

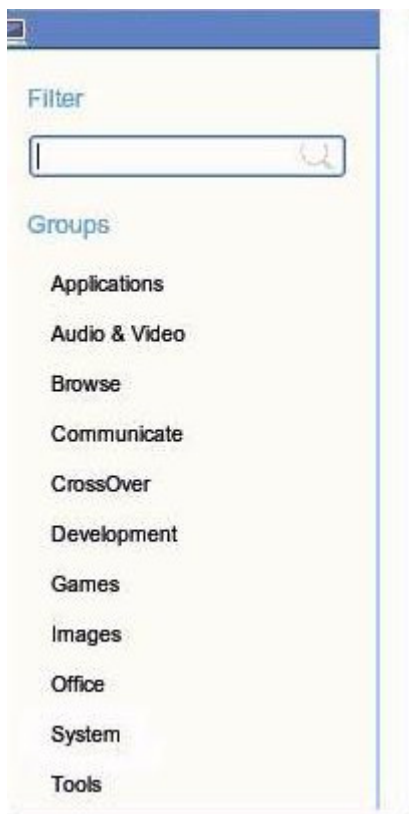
Answer:A

15.You have made the following entries on your da10 server: da10:- #umask 033 da10:- # mkdir training Which correctly reflect the permissions on the training directory?

- A.drwx-----
- B.drwxr--r--
- C.drw---x--x
- D.drw--w--w-
- E.drwx-rw-rw-
- F.drwx--wx-wx

Answer:B

16.Click the Point-and-Click button to begin. Shown is part of GNOME's More Applications screen. Click on the group icon that will allow you to select the tool to create profiles for specific users.



Answer:

17.The primary configuration of the automount program is contained in which file?

- A./etc/fstab
- B./etc/auto.misc
- C./etc/auto.home
- D./etc/auto.master
- E./root/automount.lidif

Answer:D

18.The following options appear when adding a network printer:



- A. Print via CUPS Network Server
- B. Print via LPD-Style Network Server
- C. Print via SMB Network Server
- D. Print via IPX Network Server
- E. Print Directly to a Network printer
- F. Other Setup

Answer: C

19. Shown below is results from the `ls -l` progress command: `-rw-rw-r-- 1 rtracy users 0 2007-02-07 15:30 progress` Which statement is true?

- A. The group has read only rights to this file.
- B. User rtracy has read only rights to this file.
- C. User rtracy has read and write rights to this file.
- D. All other users have read and write rights to this file.
- E. All other users have read only rights to this directory
- F. The group has read and write rights to this directory.

Answer: C

20. `bash` stores commands in a history file so you can have easy access to them again later when needed. In SUSE Linux Enterprise 10 Desktop, what is default maximum number of entries that this file is set to?

- A. 100
- B. 250
- C. 500
- D. 1,000
- E. 10,000

Answer: D