



# EXAMGOOD

## QUESTION & ANSWER

Exam Good provides update free of charge in one year!

Accurate study guides  
High passing rate!

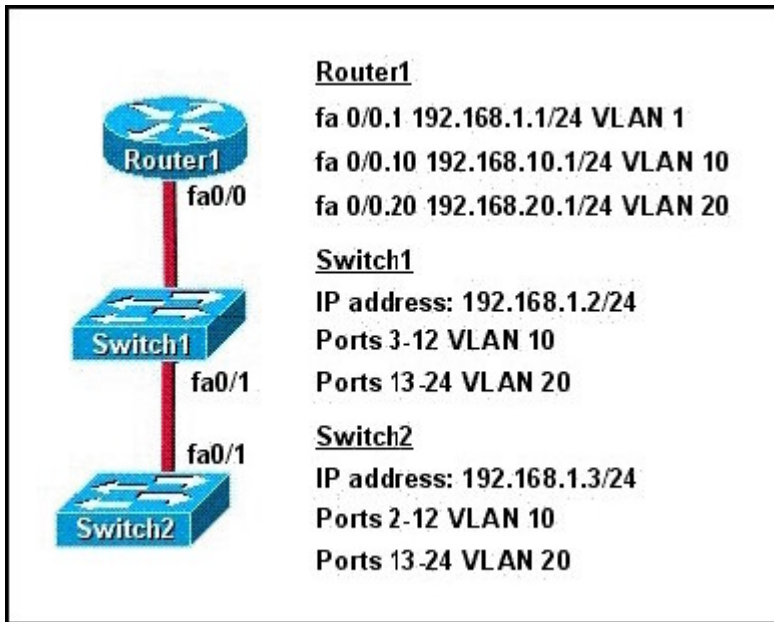
<http://www.examgood.com>

**Exam** : 640-816

**Title** : Interconnecting Cisco  
Networking Devices Part 2

**Version** : Demo

1.Refer to the exhibit.

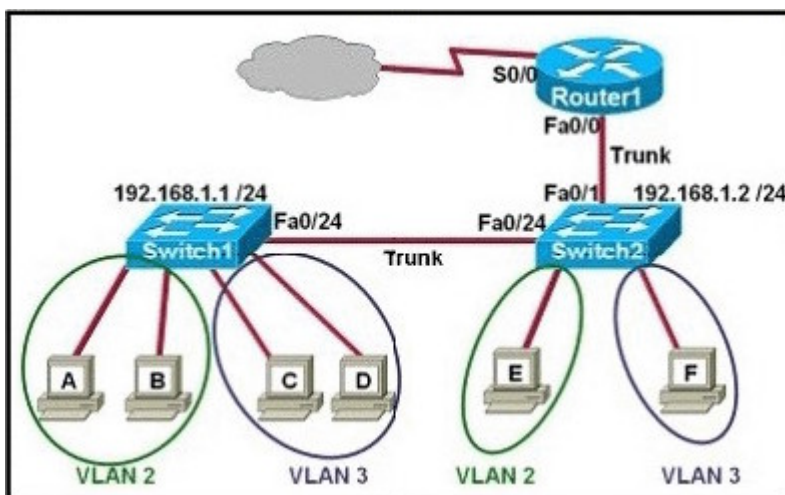


How should the FastEthernet0/1 ports on the 2950 model switches that are shown in the exhibit be configured to allow connectivity between all devices?

- A. The ports only need to be connected by a crossover cable.
- B. SwitchX(config)# interface fastethernet 0/1 SwitchX(config-if)# switchport mode trunk
- C. SwitchX(config)# interface fastethernet 0/1 SwitchX(config-if)# switchport mode access  
SwitchX(config-if)# switchport access vlan 1
- D. SwitchX(config)# interface fastethernet 0/1 SwitchX(config-if)# switchport mode trunk  
SwitchX(config-if)# switchport trunk vlan 1 SwitchX(config-if)# switchport trunk vlan 10 SwitchX(config-if)# switchport trunk vlan 20

**Answer: B**

2.Refer to the exhibit.



Which two statements are true about interVLAN routing in the topology that is shown in the exhibit.?

(Choose two.)

- A. Host E and host F use the same IP gateway address.
- B. Router1 and Switch2 should be connected via a crossover cable.

- C. Router1 will not play a role in communications between host A and host D.
- D. The FastEthernet 0/0 interface on Router1 must be configured with subinterfaces.
- E. Router1 needs more LAN interfaces to accommodate the VLANs that are shown in the exhibit.
- F. The FastEthernet 0/0 interface on Router1 and Switch2 trunk ports must be configured using the same encapsulation type.

**Answer:** DF

3.A department decides to replace its hub with a Catalyst 2950 switch that is no longer needed by another department. To prepare the switch for installation, the network administrator has erased the startup configuration and reloaded the switch. However, PCs that are connected to the switch experience various connectivity problems.

What is a possible cause of the problem?

- A. The VLAN database was not erased.
- B. The management VLAN is disabled.
- C. The running configuration should have been erased.
- D. The "mode" button was not pressed when the switch was reloaded.
- E. The switch was not configured with an IP address or a default gateway.

**Answer:** A

4.Refer to the exhibit.

```
Switch# show spanning-tree vlan 1
VLAN0001
  Spanning tree enabled protocol rstp
  Root ID    Priority    20481
             Address     0008.217a.5800
             Cost        38
             Port        1 (FastEthernet0/1)
             Hello Time  2 sec  Max Age 20 sec  Forward Delay 15 sec

  Bridge ID  Priority    32769 (priority 32768 sys-id-ext 1)
             Address     0008.205e.6600
             Hello Time  2 sec  Max Age 20 sec  Forward Delay 15 sec
             Aging Time  300

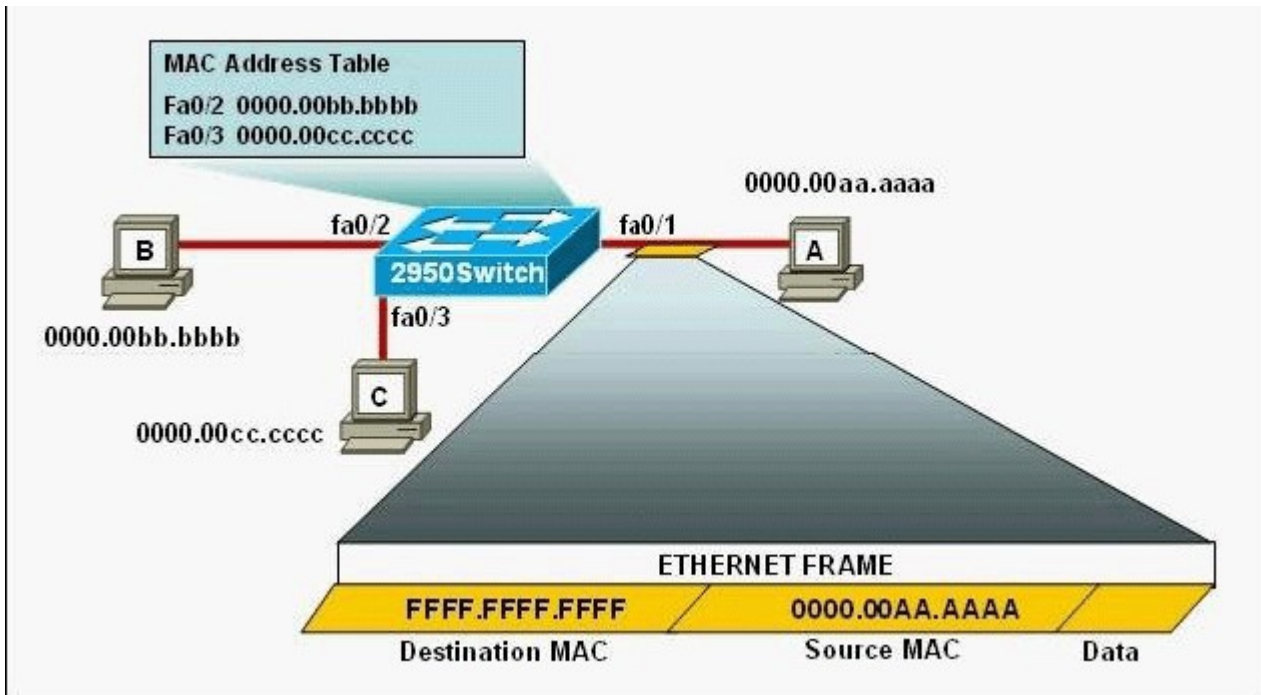
Interface         Role Sts Cost        Prio.Nbr Type
-----
Fa0/1              Root FWD 19          128.1   P2p
Fa0/4              Desg FWD 38          128.1   P2p
Fa0/11             Altn BLK 57          128.1   P2p
Fa0/13             Desg FWD 38          128.1   P2p
```

Why has this switch not been elected the root bridge for VLAN1?

- A. It has more than one interface that is connected to the root network segment.
- B. It is running RSTP while the elected root bridge is running 802.1d spanning tree.
- C. It has a higher MAC address than the elected root bridge.
- D. It has a higher bridge ID than the elected root bridge.

**Answer:** D

5.Refer to the exhibit.



The following commands are executed on interface fa0/1 of 2950 Switch.

```
2950Switch(config-if)# switchport port-security
```

```
2950Switch(config-if)# switchport port-security mac-address sticky
```

```
2950Switch(config-if)# switchport port-security maximum 1
```

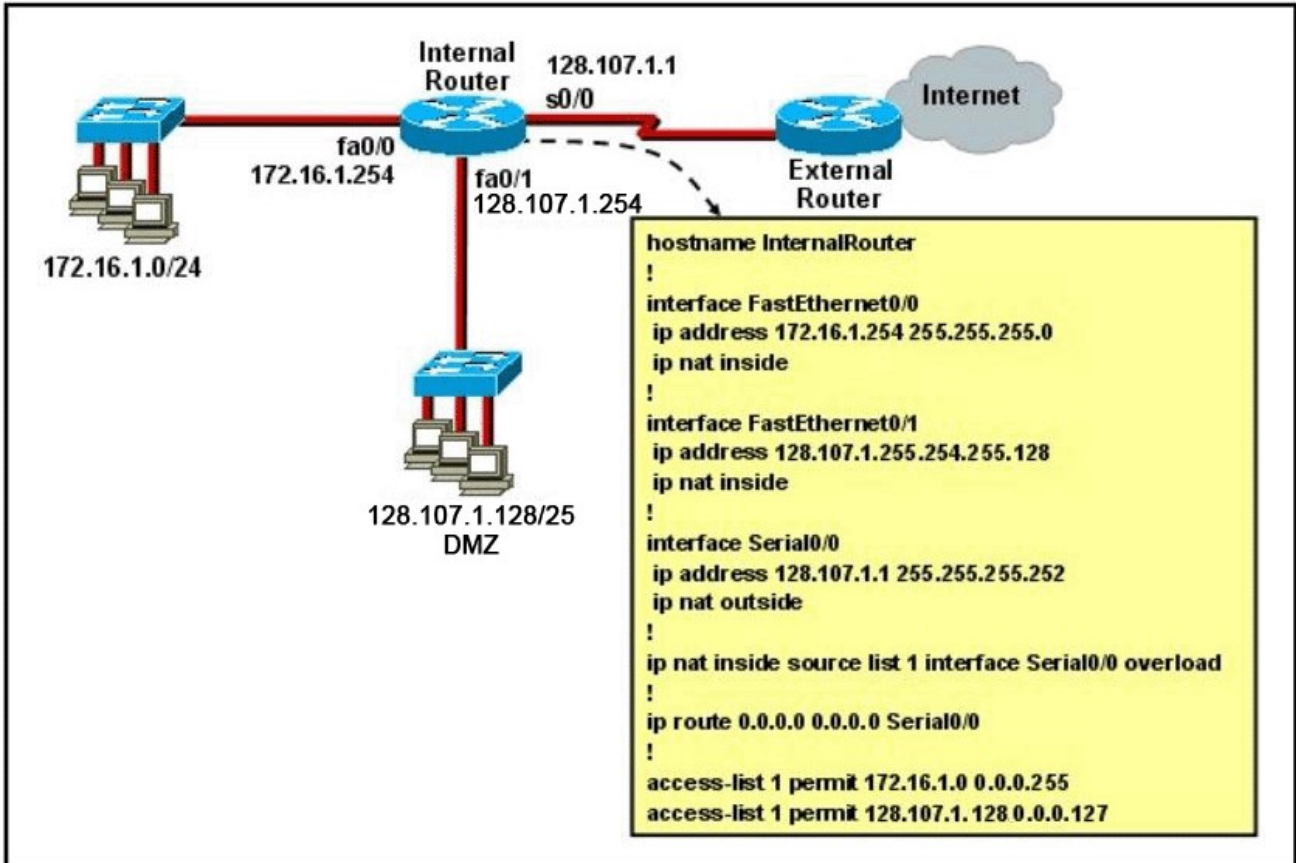
The Ethernet frame that is shown arrives on interface fa0/1.

What two functions will occur when this frame is received by 2950Switch? (Choose two.)

- A. The MAC address table will now have an additional entry of fa0/1 FFFF.FFFF.FFFF.
- B. Only host A will be allowed to transmit frames on fa0/1.
- C. This frame will be discarded when it is received by 2950Switch.
- D. All frames arriving on 2950Switch with a destination of 0000.00aa.aaaa will be forwarded out fa0/1.
- E. Hosts B and C may forward frames out fa0/1 but frames arriving from other switches will not be forwarded out fa0/1.
- F. Only frames from source 0000.00bb.bbbb, the first learned MAC address of 2950Switch, will be forwarded out fa0/1.

**Answer: BD**

6.Refer to the exhibit.



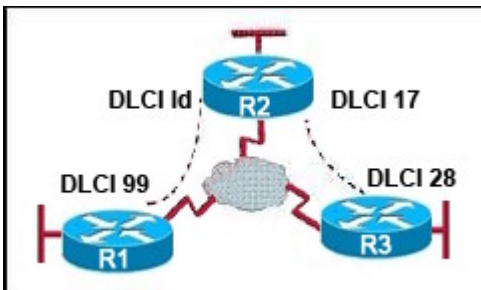
A junior network engineer has prepared the exhibited configuration file.

What two statements are true of the planned configuration for interface fa0/1? (Choose two.)

- A. The two FastEthernet interfaces will require NAT configured on two outside serial interfaces.
- B. Address translation on fa0/1 is not required for DMZ Devices to access the Internet.
- C. The fa0/1 IP address overlaps with the space used by s0/0.
- D. The fa0/1 IP address is invalid for the IP subnet on which it resides.
- E. Internet hosts may not initiate connections to DMZ Devices through the configuration that is shown.

**Answer: BE**

7.Refer to the exhibit.



Which statement describes DLCI 17?

- A. DLCI 17 describes the ISDN circuit between R2 and R3.
- B. DLCI 17 describes a PVC on R2. It cannot be used on R3 or R1.
- C. DLCI 17 is the Layer 2 address used by R2 to describe a PVC to R3.



D. DLCI 17 describes the dial-up circuit from R2 and R3 to the service provider.

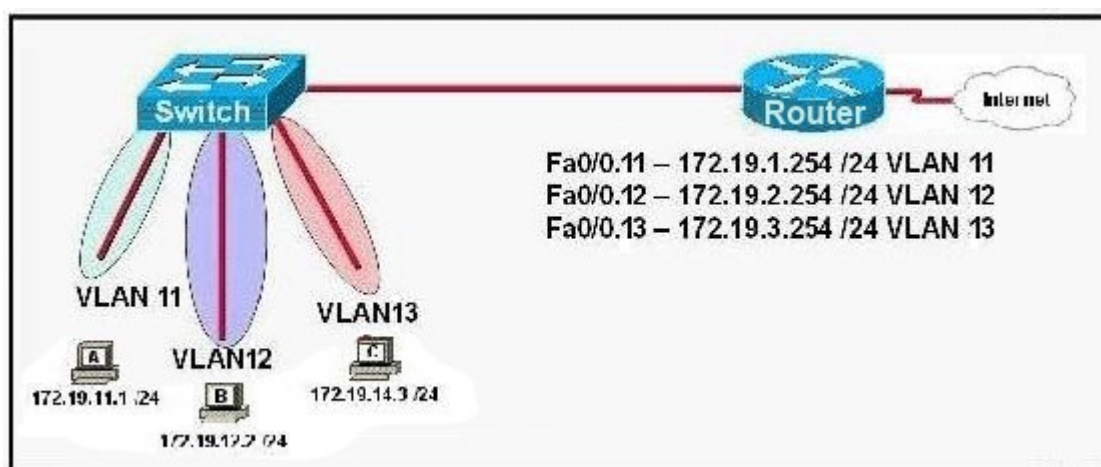
**Answer: C**

8.What is the default Local Management Interface frame type transmitted by a Cisco router on a Frame Relay circuit?

- A. Q933a
- B. B8ZS
- C. IETF
- D. Cisco
- E. ANSI

**Answer: D**

9.Refer to the exhibit.



The network shown in the exhibit has just been installed. Host B can access the Internet, but it is unable to ping host C.

What is the problem with this configuration?

- A. Host B should be in VLAN 13.
- B. The address of host C is incorrect.
- C. The gateway for host B is in a different subnet than the host is on.
- D. The switch port that sends VLAN 13 frames from the switch to the router is shut down.
- E. The switch port connected to the router is incorrectly configured as an access port.

**Answer: B**

10.At which layer of the OSI model is RSTP used to prevent loops?

- A. physical
- B. data link
- C. network
- D. transport

**Answer: B**

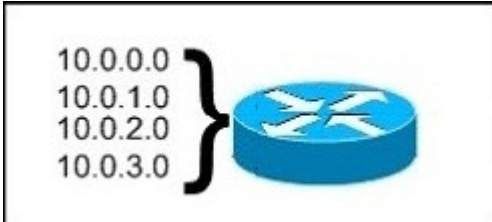
11.Which protocol provides a method of sharing VLAN configuration information between switches?

- A. VTP

- B. STP
- C. ISL
- D. 802.1Q
- E. VLSM

**Answer: A**

12.Refer to the exhibit.



What is the most appropriate summarization for these routes?

- A. 10.0.0.0 /21
- B. 10.0.0.0 /22
- C. 10.0.0.0 /23
- D. 10.0.0.0 /24

**Answer: B**

13.The network administrator has been asked to give reasons for moving from IPv4 to IPv6. What are two valid reasons for adopting IPv6 over IPv4? (Choose two.)

- A. no broadcast
- B. change of source address in the IPv6 header
- C. change of destination address in the IPv6 header
- D. Telnet access does not require a password
- E. autoconfiguration
- F. NAT

**Answer: AE**

14.The network technician is planning to use the 255.255.255.224 subnet mask on the network.

Which three valid IP addresses can the technician use for the hosts?

(Choose three.)

- A. 172.22.243.127
- B. 172.22.243.190
- C. 172.22.243.191
- D. 192.168.1.160
- E. 10.17.64.34
- F. 10.16.33.98

**Answer: BEF**

15.Which of these represents an IPv6 link-local address?

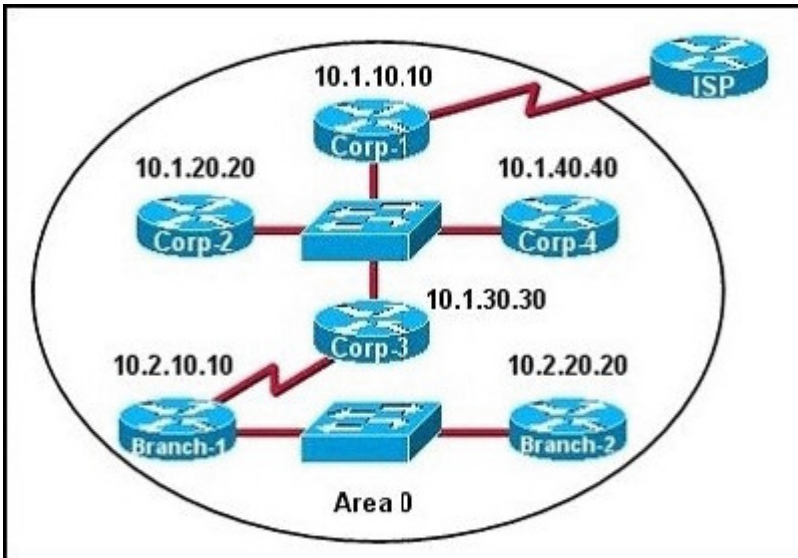
- A. FE80::380e:611a:e14f:3d69



- B. FE81::280f:512b:e14f:3d69
- C. FEFE:0345:5f1b::e14d:3d69
- D. FE08::280e:611:a:f14f:3d69

**Answer: A**

16.The internetwork infrastructure of company XYZ consists of a single OSPF area as shown in the graphic.



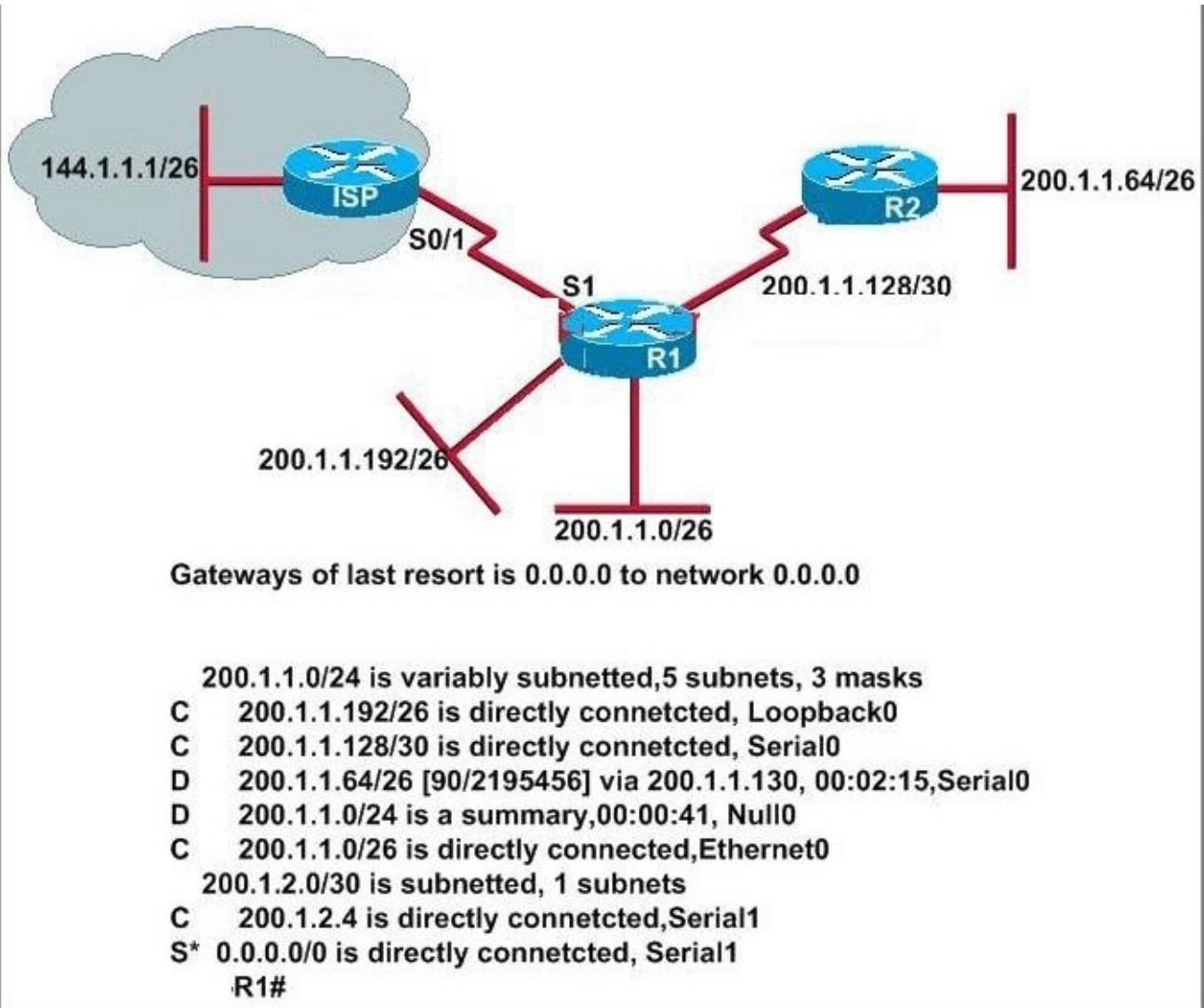
There is concern that a lack of router resources is impeding internetwork performance. As part of examining the router resources, the OSPF DRs need to be known. All the router OSPF priorities are at the default and the router IDs are shown with each router.

Which routers are likely to have been elected as DR? (Choose two.)

- A. Corp-1
- B. Corp-2
- C. Corp-3
- D. Corp-4
- E. Branch-1
- F. Branch-2

**Answer: DF**

17.Refer to the graphic and routing table for router R1.

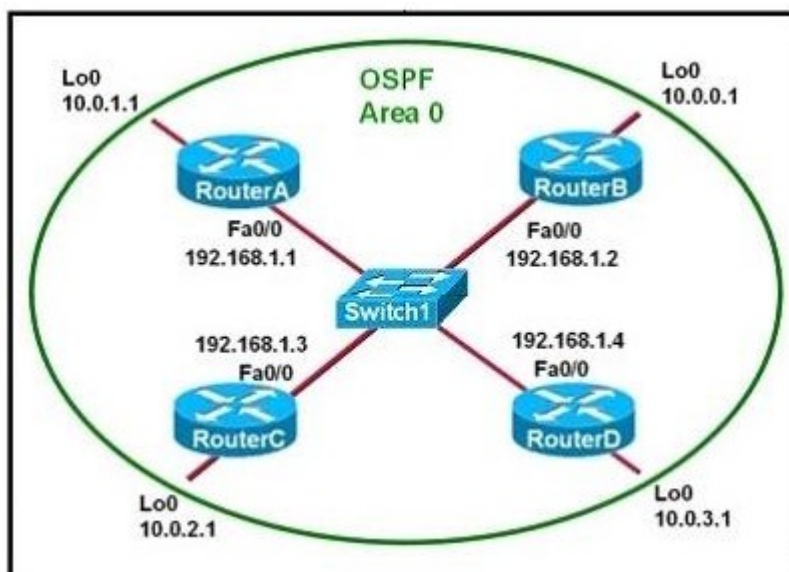


Based on the output of the R1#show ip route command and the information presented in the graphic, which of the following is a potential routing problem?

- A. the use of summarization for discontiguous networks
- B. the use of CIDR with a routing protocol that does not support it
- C. the use of VLSM with a routing protocol that does not support it
- D. the use of the no auto-summary command with a protocol that does not support summarization
- E. the use of the ip route 0.0.0.0 0.0.0.0 command with a routing protocol that does not support it

**Answer: A**

18.Refer to the exhibit.



Which two statements are true about the loopback address that is configured on RouterB? (Choose two.)

- A. It ensures that data will be forwarded by RouterB.
- B. It provides stability for the OSPF process on RouterB.
- C. It specifies that the router ID for RouterB should be 10.0.0.1.
- D. It decreases the metric for routes that are advertised from RouterB.
- E. It indicates that RouterB should be elected the DR for the LAN.

**Answer: BC**

19. What are three characteristics of the OSPF routing protocol? (Choose three.)

- A. It converges quickly.
- B. OSPF is a classful routing protocol.
- C. It uses cost to determine the best route.
- D. It uses the DUAL algorithm to determine the best route.
- E. OSPF routers send the complete routing table to all directly attached routers.
- F. OSPF routers discover neighbors before exchanging routing information.

**Answer: ACF**

20. An administrator is troubleshooting a problem between routers that are using different versions of RIP. Which two commands would provide information about which version of RIP was being sent and received on an interface? (Choose two.)

- A. show ip protocols
- B. show ip route rip
- C. show interfaces
- D. debug rip routing
- E. debug ip rip

**Answer: AE**