

# EXAMGOOD

## QUESTION & ANSWER

Exam Good provides update free of charge in one year!

Accurate study guides  
High passing rate!

<http://www.examgood.com>

**Exam : 642-081**

**Title : Business Ready Teleworker  
Solution Fundamentals**

**Version : DEMO**

**1. Due to limitations affecting voice quality, which of the broadband speeds shown is preferred in order to achieve highest voice quality on a converged data and voice teleworker connection?**

- A. DSL with 128k uplink /128k downlink
- B. cable with 256k uplink /256k downlink
- C. DSL with 128k uplink /768k downlink
- D. cable with 256k uplink /1.4M downlink

**Correct: D**

**2. Refer to the exhibit. Which of the following statements is a reason the DHCP server is enabled on the Teleworker home router?**



- A. allows for workstations to have network values hard-coded
- B. IP network settings cannot be assigned if the VPN tunnel is down
- C. provides IP network settings to be dynamically assigned
- D. requires HTTP access to initiate assignment

**Correct: C**

**3. Which integrated security feature is not provided by the Cisco Business Ready Teleworker solution?**

- A. Stateful Inspection Firewall
- B. Intrusion Detection System
- C. Spam Filtering
- D. 802.1-based Authentication
- E. Proxy Authentication
- F. URL Filtering

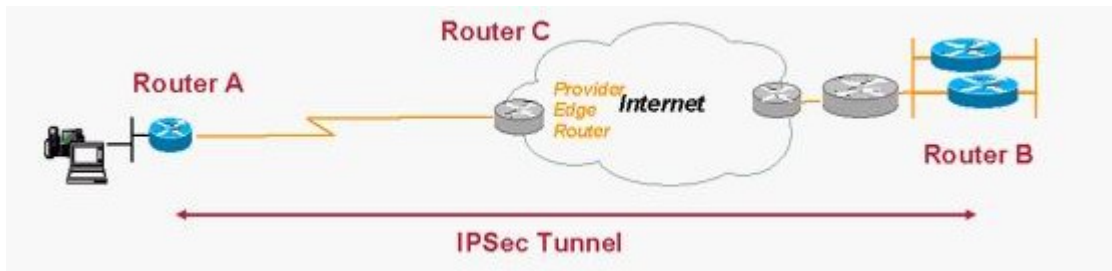
**Correct: C**

**4. Why would the network manager elect to implement a configuration that includes GRE tunnels for a teleworker deployment? Choose two.**

- A. GRE can use transport mode and save up to twenty bytes per packet.
- B. The corporate network includes many discontinuous blocks of IP networks and requires split tunneling.
- C. The corporation's primary application is based on IP multicast.
- D. Without GRE, there is no means to detect a head-end failure.
- E. GRE would enable path MTU discovery.

**Correct: B C**

**5. Refer to the exhibit. Assume Router A is configured for split tunneling. If the Internet Service provider was asked by the customer to provide a guarantee of at least 60 percent of the WAN link between Router A and Router C for encrypted traffic, what would be the best means of identifying this traffic to their QoS Service Policy?**



- A.permit esp any permit udp any eq 500 any eq 500
- B.permit udp any eq isakmp any eq isakmp
- C.permit ip 10.81.7.0 0.0.0.7 any
- D.tcp any any eq 22

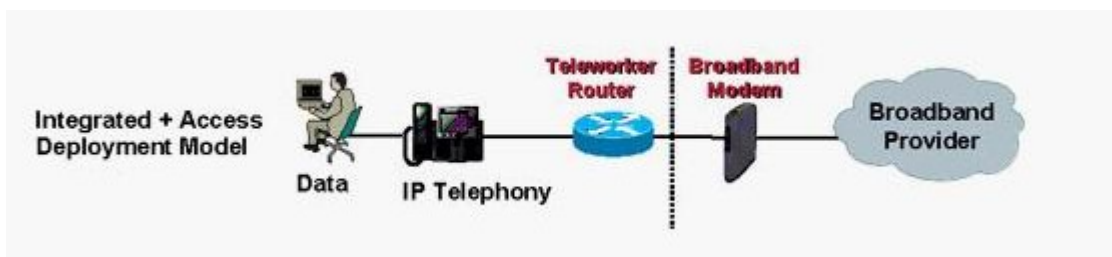
**Correct:A**

**6.What is the best way to ensure that IKE/ISAKMP packets are not dropped when QoS is enabled on the uplink interface of the Teleworker router?**

- A.QoS and IPSec should never be used together.
- B.IKE/ISAKMP packets are DiffSERV codepoint CS6, so the traffic is never dropped.
- C.Source IKE/ISAKMP packets off the loop-back address.
- D.Classify IKE/ISAKMP packets so they are appropriately prioritized.

**Correct:D**

**7.Refer to the exhibit. Given this deployment model and the Enterprise applications, the Teleworker Router provides which functions? Choose two.**



- A.Broadband access termination
- B.IPSec tunnel termination
- C.H.323 Signaling termination
- D.Traffic Shaping
- E.Compressed RTP(cRTP)for bandwidth optimization

**Correct:B D**

**8.Easy VPN operates in two modes. Although Client Mode has advantages, there are environments where it should not be used. Choose two.**

- A.Teleworker devices must be accessed from the central site (server, printers).
- B.IP addressing is simplified.
- C.The Teleworker LAN is a transit networking for routing.
- D.An Enterprise application does not function with Network Address Translation.
- E.The Teleworker router is an MPLS PE node.

**Correct:A**

**9.Refer to the exhibit. A customer indicates their teleworkers plan to use IP phones in their home offices. The IT department has surveyed the planned teleworkers, resulting in the user groupings**

shown in the exhibit. To provide the highest voice quality, the best recommendations to this customer are \_\_\_\_\_. Choose two.

Group	Percent of Users	Broadband	Uplink	Downlink
A	15%	DSL	128k	128k
B	25%	DSL	128k	768k
C	60%	Cable	256k	1.4M

- A. Deploy all three groups with a QoS service policy, choosing the parameters for Traffic Shaping based on the average uplink speed across the three groups.
- B. Teleworkers in Groups A and B should inquire with their DSL providers for subscriptions with higher uplink bandwidths.
- C. Teleworkers in Group C should change their subscriptions to DSL for deployment consistency.
- D. Teleworkers in Group A should upgrade their subscription to obtain static IP addresses
- E. Teleworkers in Group A should inquire with their DSL providers for subscriptions with higher downlink bandwidths.

**Correct: B E**

**10. When should you enable Network Address Translation Transparency (NAT-T) on the Teleworker?**

- A. when a router between the Teleworker router and the head-end VPN router is doing NAT/pNAT and does not support IPSec pass-through
- B. when the Teleworker router itself is doing NAT/pNAT
- C. always
- D. never

**Correct: A**