

# EXAMGOOD

## QUESTION & ANSWER

Exam Good provides update free of charge in one year!

Accurate study guides  
High passing rate!

<http://www.examgood.com>

**Exam** : **642-617**

**Title** : Deploying Cisco ASA  
Firewall Solutions  
(FIREWALL v1.0)

**Version** : Demo

1. Which Cisco ASA feature enables the ASA to do these two things? 1) Act as a proxy for the server and generate a SYN-ACK response to the client SYN request. 2) When the Cisco ASA receives an ACK back from the client, the Cisco ASA authenticates the client and allows the connection to the server.

- A. TCP normalizer
- B. TCP state bypass
- C. TCP intercept
- D. basic threat detection
- E. advanced threat detection
- F. botnet traffic filter

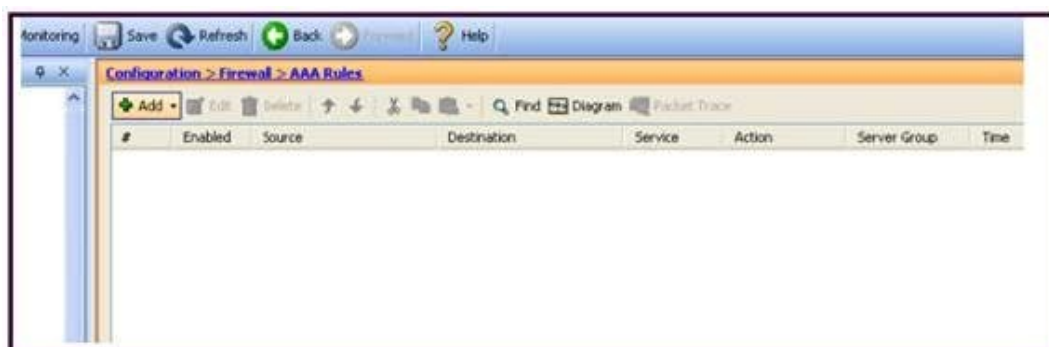
**Answer: C**

2. By default, which traffic can pass through a Cisco ASA that is operating in transparent mode without explicitly allowing it using an ACL.?

- A. ARP
- B. BPDU
- C. CDP
- D. OSPF multicasts
- E. DHCP

**Answer: A**

3. Refer to the exhibit.

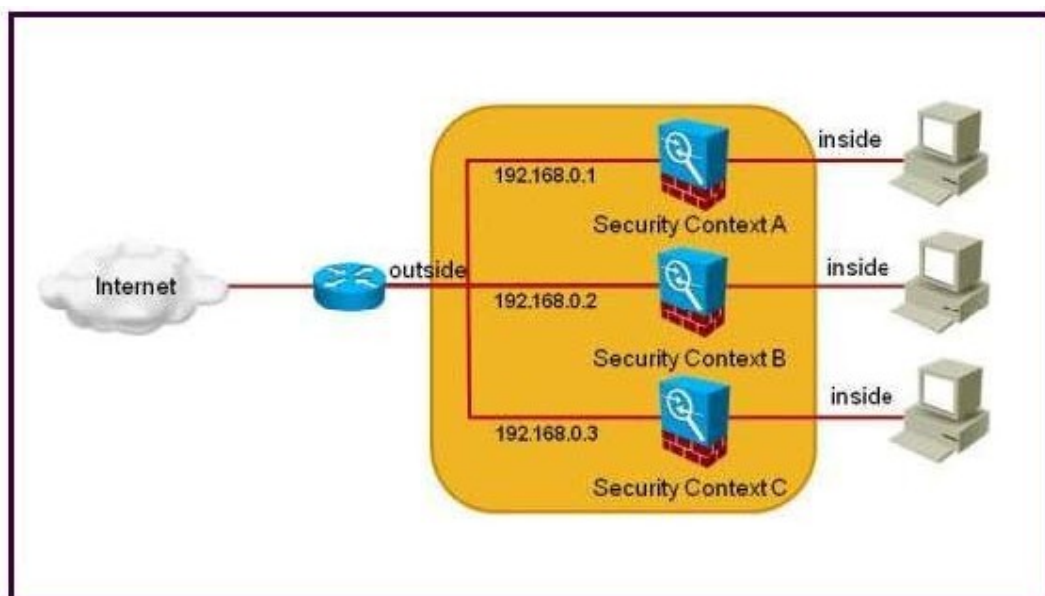


Which Cisco ASA feature can be configured using this Cisco ASDM screen?

- A. Cisco ASA command authorization using TACACS+
- B. AAA accounting to track serial, ssh, and telnet connections to the Cisco ASA
- C. Exec Shell access authorization using AAA
- D. cut-thru proxy
- E. AAA authentication policy for Cisco ASDM access

**Answer: D**

4. Refer to the exhibit.



The Cisco ASA is dropping all the traffic that is sourced from the internet and is destined to any security context inside interface. Which configuration should be verified on the Cisco ASA to solve this problem?

- A. The Cisco ASA has NAT control disabled on each security context.
- B. The Cisco ASA is using inside dynamic NAT on each security context.
- C. The Cisco ASA is using a unique MAC address on each security context outside interface.
- D. The Cisco ASA is using a unique dynamic routing protocol process on each security context.
- E. The Cisco ASA packet classifier is configured to use the outside physical interface to assign the packets to each security context.

**Answer: C**

5. Which four types of ACL object group are supported on the Cisco ASA (release 8.2)? (Choose four.)

- A. protocol
- B. network
- C. port
- D. service
- E. icmp-type
- F. host

**Answer: A,B,D,E**

6. Refer to the exhibit.



Which two CLI commands will result? (Choose two. )

- A. aaa authorization network LOCAL
- B. aaa authorization network default authentication-server LOCAL
- C. aaa authorization command LOCAL
- D. aaa authorization exec LOCAL
- E. aaa authorization exec authentication-server LOCAL
- F. aaa authorization exec authentication-server

**Answer: C,D**

7.Refer to the exhibit.

| Name                               | Match Conditions |   |  |
|------------------------------------|------------------|---|--|
|                                    | Match Type       | Criterion                                     | Value  |
| _default_GoToMyPC-tunnel           | AND              | Request Arguments<br>Request URI              | R _default_GoToMyPC-tunne<br>R _default_GoToMyPC-tunne       |
| _default_aim-messenger             |                  | Request Header Field (host)                   | R _default_aim-messenger                                     |
| _default_firethru-tunnel           | AND              | Request Header Field (host)<br>Request URI    | R _default_firethru-tunnel_1<br>R _default_firethru-tunnel_2 |
| _default_gator                     |                  | Request Header Field (user-agent)             | R _default_gator   |
| _default_gnu-http-tunnel           | AND              | Request Arguments<br>Request URI              | R _default_gnu-http-tunnel_<br>R _default_gnu-http-tunnel_1  |
| _default_http-tunnel               |                  | Request URI                                   | R _default_http-tunnel                                       |
| _default_httpport-tunnel           |                  | Request Header Field (host)                   | R _default_httpport-tunnel                                   |
| _default_kazaa                     |                  | Response Header Field Count (_default_... > 0 |  |
| _default_msn-messenger             |                  | Response Header Field (content-type)          | R _default_msn-messenger                                     |
| _default_shoutcast-tunneling-pr... |                  | Request Header Field (_default_icy-meta..     | R _default_shoutcast-tunnelli                                |
| _default_windows-media-player-...  |                  | Request Header Field (user-agent)             | R _default_windows-media-pl                                  |
| _default_yahoo-messenger           |                  | Request Body                                  | R _default_yahoo-messenger                                   |

Which two statements about the class maps are true? (Choose two.)

- A. These class maps are referenced within the global policy by default for HTTP inspection.
- B. These class maps are all type inspect http class maps.
- C. These class maps classify traffic using regular expressions.
- D. These class maps are Layer 3/4 class maps.
- E. These class maps are used within the inspection\_default class map for matching the default inspection

traffic.

**Answer:** B,E

8.Refer to the exhibit.

```
%ASA-2-106006: Deny inbound UDP from 10.1.1.1/520 to 224.0.0.9/520 on interface outside
%ASA-2-106006: Deny inbound UDP from 192.168.1.1/520 to 224.0.0.9/520 on interface inside
```

A Cisco ASA in transparent firewall mode generates the log messages seen in the exhibit. What should be configured on the Cisco ASA to allow the denied traffic?

- A. extended ACL on the outside and inside interface to permit the multicast traffic
- B. EtherType ACL on the outside and inside interface to permit the multicast traffic
- C. stateful packet inspection
- D. static ARP mapping
- E. static MAC address mapping

**Answer:** A

9.The Cisco ASA must support dynamic routing and terminating VPN traffic. Which three Cisco ASA options will not support these requirements? (Choose three.)

- A. transparent mode
- B. multiple context mode
- C. active/standby failover mode
- D. active/active failover mode
- E. routed mode
- F. no NAT-control

**Answer:** A,B,D

10.Refer to the exhibits.

The screenshot shows the 'Add Static Policy NAT Rule' configuration window in Cisco ASDM. It is organized into three main sections: 'Original', 'Translated', and 'Port Address Translation (PAT)'.  
1. 'Original' section: Contains three fields. 'Interface' is a dropdown menu showing a question mark. 'Source' is a text input field with a question mark. 'Destination' is a text input field with a question mark.  
2. 'Translated' section: Contains two radio button options. 'Use IP Address' is selected, with a corresponding text input field containing a question mark. 'Use Interface IP Address' is unselected.  
3. 'Port Address Translation (PAT)' section: Contains a checkbox for 'Enable Port Address Translation (PAT)' which is unselected. Below it is a 'Protocol' section with 'TCP' selected and 'UDP' unselected. At the bottom are two empty text input fields for 'Original Port' and 'Translated Port'.

Which five options should be entered into the five fields in the Cisco ASDM Add Static Policy NAT Rule screen? (Choose five.)

```
access-list POLICY_NAT_ACL extended permit ip host 172.16.0.10 10.0.1.0 255.255.255.0 static (dmz,outside) 192.168.2.10 access-list POLICY_NAT_ACL
```

- A. dmz = Original Interface
- B. outside = Original Interface
- C. 172.16.0.10 = Original Source
- D. 192.168.2.10 = Original Source
- E. 10.0.1.0/24 = Original Destination
- F. 192.168.2.10 = Original Destination
- G. dmz = Translated Interface
- H. outside = Translated Interface
- I. 192.168.2.10 = Translated Use IP Address
- J. 172.16.0.10 = Translated Use IP Address

**Answer:** A,C,E,H,I

11. By default, which access rule is applied inbound to the inside interface?

- A. All IP traffic is denied.
- B. All IP traffic is permitted.
- C. All IP traffic sourced from any source to any less secure network destinations is permitted.
- D. All IP traffic sourced from any source to any more secure network destinations is permitted

**Answer:** C

12. In which type of environment is the Cisco ASA MPF set connection advanced-options tcp-statebypass option the most useful?

- A. SIP proxy
- B. WCCP
- C. BGP peering through the Cisco ASA
- D. asymmetric traffic flow
- E. transparent firewall

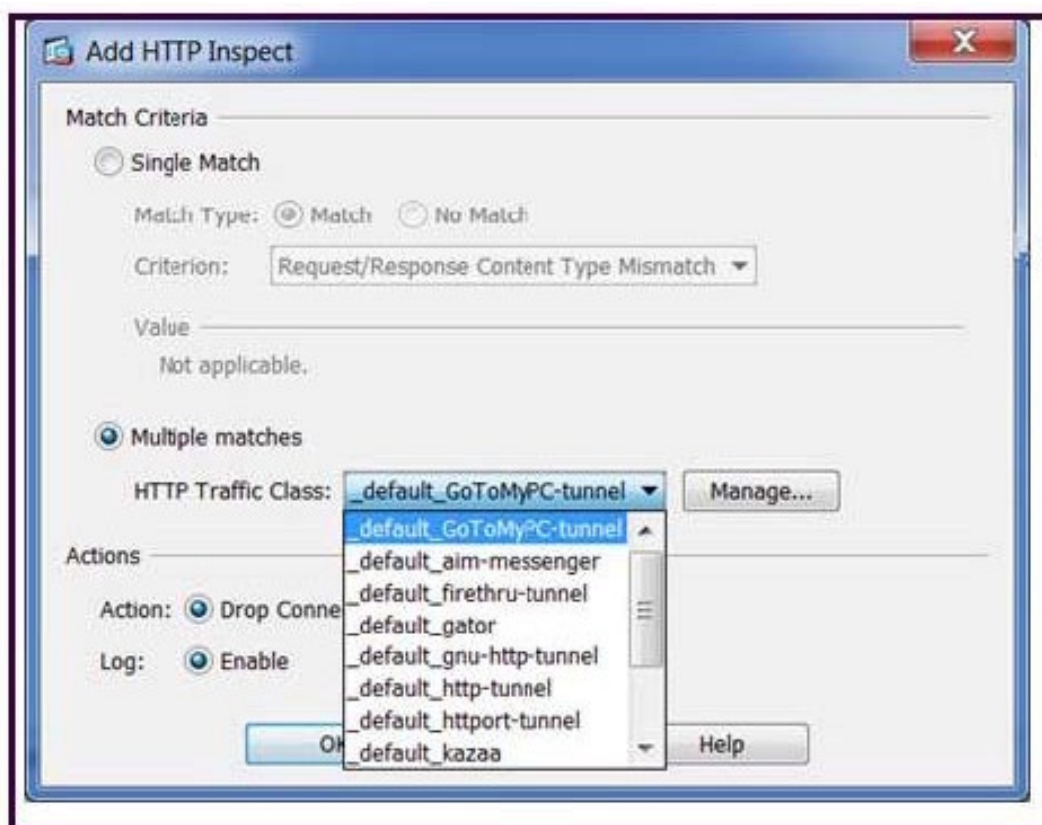
**Answer: D**

13. Which Cisco ASA platform should be selected if the requirements are to support 35,000 connections per second, 600,000 maximum connections, and traffic shaping?

- A. 5540
- B. 5550
- C. 5580-20
- D. 5580-40

**Answer: B**

14. Refer to the exhibit.



What is the resulting CLI command?

- A. match request uri regex \_default\_GoToMyPC-tunnel drop-connection log
- B. match regex \_default\_GoToMyPC-tunnel drop-connection log
- C. class \_default\_GoToMyPC-tunnel drop-connection log
- D. match class-map \_default\_GoToMyPC-tunnel drop-connection log

**Answer: C**



15. A customer is ordering a number of Cisco ASAs for their network. For the remote or home office, they are purchasing the Cisco ASA 5505. When ordering the licenses for their Cisco ASAs, which two licenses must they order that are "platform specific" to the Cisco ASA 5505? (Choose two.)

- A. AnyConnect Essentials license
- B. per-user Premium SSL VPN license
- C. VPN shared license
- D. internal user licenses
- E. Security Plus license

**Answer:** D,E