

# EXAMGOOD

## QUESTION & ANSWER

Exam Good provides update free of charge in one year!

Accurate study guides  
High passing rate!

<http://www.examgood.com>

**Exam : 70-210**

**Title : Installing, Configuring and  
Administering Microsoft  
Windows 2000 Professional**

**Version : DEMO**

**1.Your Windows 2000 Professional computer has 10 shared folders that are available to other network users. A user reports that he cannot access a shared folder named ShareA.You want to respond to the user's problem as quickly as possible by using an administrative tool. However, you cannot remember the server location of ShareA.What should you do?**

- A.Use Windows Explorer to display the file paths of your shared folders.
- B.Use Storage in Computer Management to view logical drive properties.
- C.Use Event Viewer in Computer Management to search for shared folder error messages.
- D.Use System Tools in Computer Management to display the file paths of your shared folders.

**Correct:D**

**2.Your Windows 2000 Professional computer contains a single hard disk configured as a single partition. You want to move a folder named Sales under a folder named Corp on your computer.You want the files in the Sales folder to remain compressed after moving the folder. You want the files in the Corp folder to remain uncompressed. You want to ensure that the files are recoverable in case of any disk problems. You also want to move the files with the least amount of administrative effort.What should you do?**

- A.Copy the Sales folder to the Corp folder. Do nothing further.
- B.Back up the Sales folder. Move the Sales folder to the Corp folder.
- C.Compress the Corp folder. Then copy the Sales folder to the Corp folder.
- D.Move the Sales folder to a second computer. Then move the Sales folder to the Corp folder.

**Correct:B**

**3.You are the administrator of your company's network. A user named Peter runs Windows 2000 Professional on his portable computer. Peter wants to be able to work at home on files that were created in the office on the company network. Prior to logging off the network and leaving the office, Peter enables Offline Files.Peter calls you from home and reports that copies of his folders and files on the network are not available on his portable computer. What should you instruct Peter to do?**

- A.Enable file and print sharing. Peter will be able to access his files at home immediately.
- B.Synchronize all offline files. Peter will be able to access his files at home immediately.
- C.At the office, make all files available offline. Peter will be able to access his files the next time he logs off the network.
- D.At the office, create a shortcut to the Offline Files folder. Peter will be able to access his files the next time he logs off the network.

**Correct:C**

**4.Your Windows 2000 Professional computer has 50 MB of free disk space on drive C and 500 MB of free disk space on drive D. Print jobs are failing because the available space on drive C is inadequate. You want print jobs to be able to use the space on drive D.What should you do?**

- A.From the Print Server Properties dialog box, change the location of the spool folder to any existing file path on drive D.
- B.From the Printer Properties dialog box, use Advanced settings to change the location of the spool folder to D:\Winnt\System32\Spool\Printers.
- C.Copy the C:\Winnt\System32\Spool\Printers folder to the D:\Winnt\System32\Spool\Printers folder.
- D.Mount drive C as a subdirectory on drive D.

**Correct:A**

**5.You are the administrator of a Windows 2000 Professional computer named Computer1.**

**Computer1 has a shared color laser printer named Printer1. Printer1 will not turn on. The print queue for Printer1 has three jobs waiting to print. You want to enable the three waiting print jobs to print to an identical print device, which has been shared as Printer2 on Computer2. You also want to allow users who currently connect to Printer1 to automatically use Printer2 without having to reconfigure their default printer. What should you do?**

- A. Enable bidirectional support for Printer1.
- B. Change the share name of Printer2 to Printer1.
- C. Configure Printer1 to add a port, and set the port to \\Computer2\Printer2.
- D. Configure the print server properties to use the path \\Computer2\Winnt\$\System32\Spool\Printers.

**Correct: C**

**6. Your Windows 2000 Professional computer has a removable disk device installed. The device can use storage modules of varying sizes. You use these storage modules to transfer graphics files between your location and a printing company. The printing company uses Windows NT 4.0 Service Pack 3. You insert a new 20-MB disk device into your computer. When you attempt to format it as FAT32 with the default options, you receive the following error message: "Windows was unable to complete the format." You need to format the device so that you can use it to send a large graphic file to the printing company. How should you format the device?**

- A. as FAT16 with a 4-KB cluster size
- B. as FAT32 with a 1-KB cluster size
- C. as FAT32 with a 4-KB cluster size
- D. as NTFS with a 4-KB cluster size

**Correct: A**

**7. You install Windows 2000 Professional on a new APM-compliant portable computer. You notice that whenever you attempt to shut down the computer, the Windows 2000 shutdown screen remains on the screen and the power remains on. You attempt to shut off the computer by using the power button, but you are unsuccessful. You want to configure the portable computer to shut off when Windows 2000 Professional shuts down. What should you do?**

- A. Restart the computer, disable APM in the system BIOS, and then restart the computer.
- B. Restart the computer, use Power Options in Control Panel to enable APM, and then restart the computer.
- C. Restart the computer, use Power Options in Control Panel to enable hibernate support, and then restart the computer.
- D. Restart the computer, use Power Options in Control Panel to create a different power scheme, and then restart the computer.

**Correct: B**

**8. You run the English (US) edition of Windows 2000 Professional on your computer. You are developing a product installation document that has text in both English and Spanish. The word processing program you are using is a Windows 16-bit character-based application. You start the word processing program and complete the English portion of the document. You then install Spanish as a language group by using Regional Options in Control Panel. However, you cannot use Spanish to complete the Spanish portion of your document. What should you do?**

- A. Change the language preference from English to Spanish within the word processing program.
- B. Install the Spanish version of Windows 2000 Professional. Reconfigure your language settings, and restart the word processing program.

C.Save and close the word processing program. Select Spanish by using the locale indicator on the taskbar, and restart the word processing program.

D.Save and close the word processing program. Log off and log on to the computer. Restart the word processing program, and select Spanish by using the locale indicator on the taskbar.

**Correct:C**

**9.You are delegated administrative control of the Administration organizational unit (OU). The Administration OU has 12 Windows 2000 Professional computers that were recently purchased. Each computer has a fax modem. Each computer has the Fax service installed with the default values and settings.A user named Helene reports that she can use Microsoft Word 2000 to send faxes, but she cannot receive any faxes by using the fax printer. She also informs you that she cannot reconfigure the Fax service on her computer.You want to reconfigure the Fax service to work correctly. You want to accomplish this with the least amount of administrative effort.You log on to Helene's computer by using the local Administrator account. What should you do next?**

A.Use Fax Service Management to start the Fax service, and configure the Fax service to start automatically.

B.Use Fax Service Management to select the Fax Management service, and enable the device to receive faxes.

C.Use Fax in Control Panel to reinstall the Fax service, and configure the Fax service to receive faxes.

D.Use Fax in Control Panel to add a fax printer, and configure the fax print device to receive faxes.

**Correct:B**

**10.You are the administrator of your company's network. You configure a local group named Accounting to have a mandatory user profile. The mandatory profile has been configured to include a custom logo that was saved with 16-bit color and 1024 x 768 resolution.Some of the Windows 2000 Professional computers in the accounting department have standard VGA video adapters, and others have SVGA video adapters.Several users report that when they log on to certain Windows 2000 Professional computers, the custom bitmap becomes very pixilated and distorted, and does not reflect the proper color depth.You want users to be able to correctly view the custom bitmap on any computer in the accounting department.What should you do?**

A.Configure a roaming user profile for each user in the Accounting group.

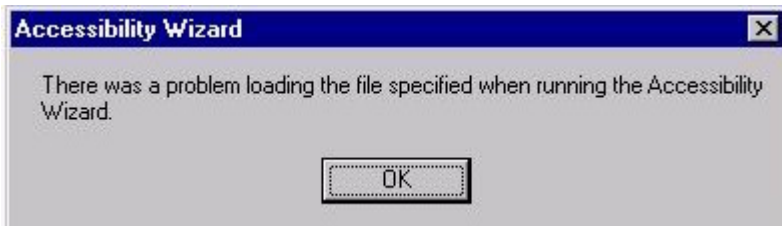
B.Configure a separate user profile for each user in the Accounting group.

C.Change the custom bitmap to a 16-color bitmap that has 640 x 480 resolution, and reconfigure the mandatory user profile.

D.Reinstall the appropriate WDM-compliant drivers for the computers that do not display the custom bitmap correctly.

**Correct:C**

**11.You are the administrator of your company's network. A user named Andrew has limited dexterity, which prevents him from using the standard keyboard when completing his daily computing tasks.You configure his Windows 2000 Professional computer to use the on-screen keyboard and StickyKeys option. You save the accessibility option settings to a shared folder on the local hard disk of Andrew's computer.You want to configure the same options for another user named Peter. You log on to Peter's computer by using Peter's local user account. You access the shared folder over the network from Peter's computer. You select the .acw file from the shared folder to set up Peter's computer to use the accessibility options. You receive the error message shown in the exhibit. (Click the Exhibit button.)What should you do?**



- A. Copy the .acw file to the C:\Documents and Settings\Default User folder.
- B. Save the accessibility options to a floppy disk and change the permissions to allow full control of the file.
- C. Resave the settings for the options by using Utility Manager. Then copy the file to Peter's local profile folder.
- D. Change the permissions of the .acw file in the shared network folder to allow read access for Peter's user account.

**Correct: D**

**12. Users report that some shortcuts on the Start menu of their Windows 2000 Professional computers are hidden. They want to access their shortcuts without having to click a scroll arrow. How must you configure the client computers to always display all Start menu shortcuts?**

- A. In the Folder Options dialog box, clear the Enable Web content check box in My Desktop Properties.
- B. In the Display Properties dialog box, clear the Transition effects for menus and tooltips check box.
- C. In the Folder Options dialog box, clear the Hide file extensions for known file types check box.
- D. In the Taskbar and Start Menu Properties dialog box, clear the Use Personalized Menus check box.

**Correct: D**

**13. You are the administrator of a Windows 2000 network that has 1,500 Windows 2000 Professional computers. Microsoft Office 2000 was assigned to all the computers on the network by using a Group Policy object (GPO). You deploy the Office 2000 service release to all of the Windows 2000 Professional computers on the network. The service release, in addition to other software that had been assigned, fails to install on only one of the computers. What should you do?**

- A. Redeploy the service release by using a .zap file.
- B. Redeploy the service release by using an .mst file.
- C. Restart Windows Installer on the domain controller.
- D. Restart Windows Installer on the computer that failed to install the service release.

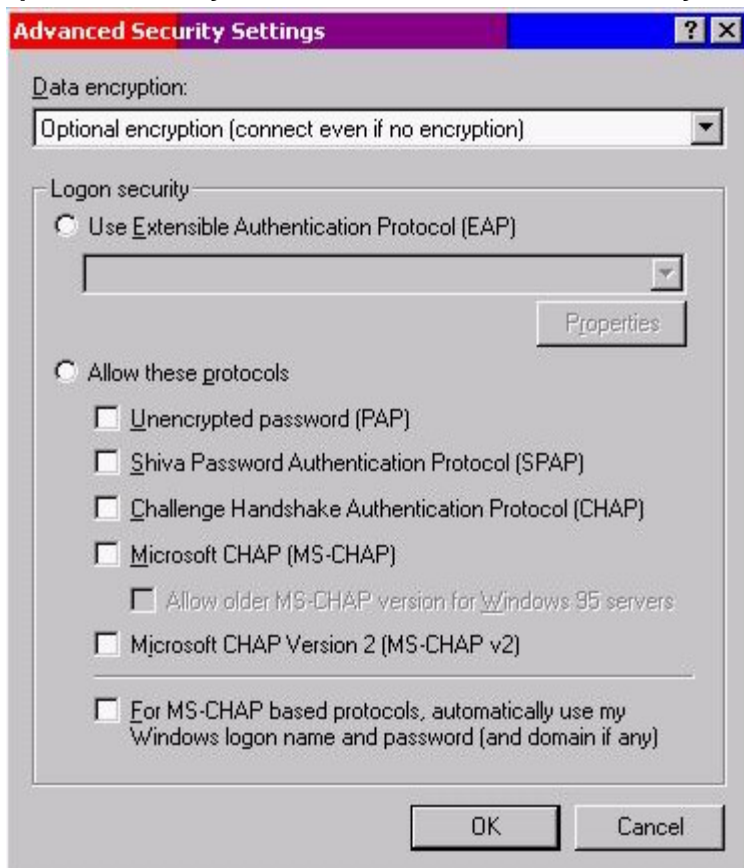
**Correct: D**

**14. You upgrade 11 computers in the accounting department from Windows NT Workstation 4.0 to Windows 2000 Professional. All of the upgraded computers are configured to have the default security settings. After the upgrade, users in the accounting department report that they can no longer run any financial or credit applications on their computers. You want all accounting department users to be able to run these applications. You want to allow only the rights that allow users to run the applications. What should you do?**

- A. Add each user account to the Power Users group on that user's computer.
- B. Configure the financial and credit applications to run as services on the computers in the accounting department.
- C. Apply the Compatws.inf security template to the local security policy of the computers in the accounting department.
- D. Use the Computer Management console to configure separate memory spaces for each financial and credit application on the accounting department computers.

**Correct:C**

15.You are configuring a Windows 2000 Professional portable computer to use a dial-up connection to connect to a Routing and Remote Access server. The computer has a smart card reader and the appropriate drivers installed.You use MMC to request a new certificate. You then install the certificate to the smart card. You now want to use your smart card for authentication when you connect to the Routing and Remote Access server. You want to use the Advanced Security Settings dialog box as shown in the exhibit. (Click the Exhibit button.)Which option or options should you enable in the Advanced Security Settings dialog box? (Choose all that apply.)



- A.Use Extensible Authentication Protocol (EAP)
- B.Unencrypted password (PAP)
- C.Shiva Password Authentication Protocol (SPAP)
- D.Challenge Handshake Authentication Protocol (CHAP)
- E.Microsoft CHAP (MS-CHAP)
- F.Microsoft CHAP Version 2 (MS-CHAP v2)
- G.For MS-CHAP based protocols, automatically use my Windows logon name and password (and domain, if any)

**Correct:A**

16.You upgrade all client computers in your network to Windows 2000 Professional. Then you apply the Basicwk.inf security template to the computers. Now, none of the users can run the companys database application.What should you do?

- A.Apply the Compatws.inf security template to the computers.
- B.Delete the Basicwk.inf security template file from the computers.
- C.Use the System Policy Editor to configure a new security policy for the database application.



D.For each user account, allow Read permission to the database application and its associated files.

**Correct:A**

**17.You recently upgraded all Windows NT Workstation 4.0 computers to Windows 2000 Professional. You want to give a new employee named Maria the ability to back up files, share resources, and install programs on a client computer that she shares with other users. You do not want Maria to be able to read other users' files.What should you do to accomplish these goals? (Choose all that apply.)**

- A.Add Maria's user account to the System group.
- B.Add Maria's user account to the Interactive group.
- C.Add Maria's user account to the Power Users group.
- D.Add Maria's user account to the Administrators group.
- E.Add Maria's user account to the Backup Operators group.

**Correct:C E**

**18.You are the administrator of your company's network. Ten Windows 2000 Professional computers are located in the research department. The computers contain highly confidential information.You want the 10 computers to be able to communicate with other Windows 2000 computers on the network. However, you do not want the computers to communicate with computers that are not running Windows 2000, including those that are running Windows 95, Windows 98, and Windows NT.You want to configure a Security Policy on each computer to ensure that the confidential information is secure. What should you do?**

- A.Use Security Configuration and Analysis to import the Hisecws.inf security template file to modify the default security settings.
- B.Use Security Templates to create a security template file and import the security settings to modify the default security settings.
- C.Use the Local Computer Policy to disable the Access this computer from the network option.
- D.Use Secedit.exe to reconfigure the computer default security settings to not allow anonymous access to the computers.

**Correct:A**

**19.A user in your company network needs to encrypt a folder that is on her Windows 2000 Professional computer. Her computer has two drives: drive C and drive D. The folder that needs to be encrypted is located on drive D. When the user attempts to encrypt the folder, no option for encryption can be found in the folder properties.What should you do to enable the user to encrypt the folder?**

- A.Log on to her computer as an Administrator, and then run the cipher /e command.
- B.Instruct the user to run the cipher /e command.
- C.Log on to her computer as an Administrator, and then run the Secedit /enforce command.
- D.Instruct the user to run the Secedit /enforce command.
- E.Log on to her computer as an Administrator, and then run the Convert d: /FS:NTFS command.

**Correct:E**

**20.Your Windows 2000 Professional computer is configured to support two monitors. You install a DOS-based application on your computer. The application uses the Windows 2000 Professional default settings Autoexec.nt and Config.nt.Your primary and secondary video adapters are both set to 16-bit color, 1024 x 768 resolution, and default refresh rates. You create a shortcut for the DOS-based application on the primary monitor's desktop and use the default PIF settings.You**



**attempt to run the DOS-based application on the primary monitor. The application opens, but the display area is scrambled. You then attempt to run the DOS-based application on the secondary monitor. The application does not open. Both monitors function correctly when you run Windows-based applications.What should you do?**

- A.Change the color setting for both video adapters to 256 colors. Reconfigure the shortcut properties to run the DOS-based application in full-screen mode.
- B.Change the refresh rate setting to optimal for both video adapters. Reconfigure the PIF settings of the DOS-based application to start in a window.
- C.Change the drivers for the secondary video adapter from WDM-compliant drivers to DOS drivers. Reconfigure the PIF settings to run the DOS-based application in full-screen mode.
- D.Update the drivers for the primary video adapter. Change the secondary video adapter to use 640 x 480 resolution and 256 colors.

**Correct:A**