

EXAMGOOD

QUESTION & ANSWER

Exam Good provides update free of charge in one year!

Accurate study guides
High passing rate!

<http://www.examgood.com>

Exam : 70-299

Title : Implementing and
Administering Security in a
Microsoft Windows Server
2003 Network

Version : DEMO

1.You are a security administrator for your company. The network includes a public key infrastructure (PKI) that supports smart card logon. All client computers have smart card readers. Managers are issued smart cards. Managers are required to use smart cards when logging on to client computers. You need to ensure that managers are required to use a smart card when logging on to any client computer and that all other users are required to use a smart card when logging on to a client computer assigned to a manager. Which two actions should you perform? (Each correct answer presents part of the solution. Choose two.)

- A.On the properties of each user account used by a manager, select the Smart card required for interactive logon check box.
- B.On the computer account for each manager's client computer, edit the DACL so that only managers are assigned the Allow - Allowed to authenticate permission.
- C.Place all client computers used by managers in an organizational unit (OU). Link a new Group Policy object (GPO) to the OU. Configure the GPO to enforce the Interactive logon: Require smart card setting.
- D.Place all client computers used by managers in an organizational unit (OU). Link a new Group Policy object (GPO) to the OU. Configure the GPO to set the startup type of the Smart Card service to Automatic.

Answer: A C

2.You are a security administrator for your company. The network consists of an Active Directory forest that contains two domains. The domains are named treyresearch.com and litwareinc.com. All Active Directory domains are running at a Windows Server 2000 mixed mode functionality level. Employees in the help desk department need to modify certain attributes of employee user accounts that reside in the treyresearch.com domain. The help desk department user accounts reside in the litwareinc.com domain. You need to create a single group named Help Desk that contains all help desk department user accounts and that can be granted access to modify the employee user accounts in the treyresearch.com domain. What should you do?

- A.Use a universal security group in the treyresearch.com domain named Help Desk.
- B.Use a universal security group in the litwareinc.com domain named Help Desk.
- C.Use a global security group in the litwareinc.com domain named Help Desk.
- D.Use a global security group in the treyresearch.com domain named Help Desk.

Answer: C

3.You are a security administrator for Contoso, Ltd. The network consists of a single Active Directory domain named contoso.com. All servers run Windows Server 2003. All client computers run Windows XP Professional. All computers are members of the domain.

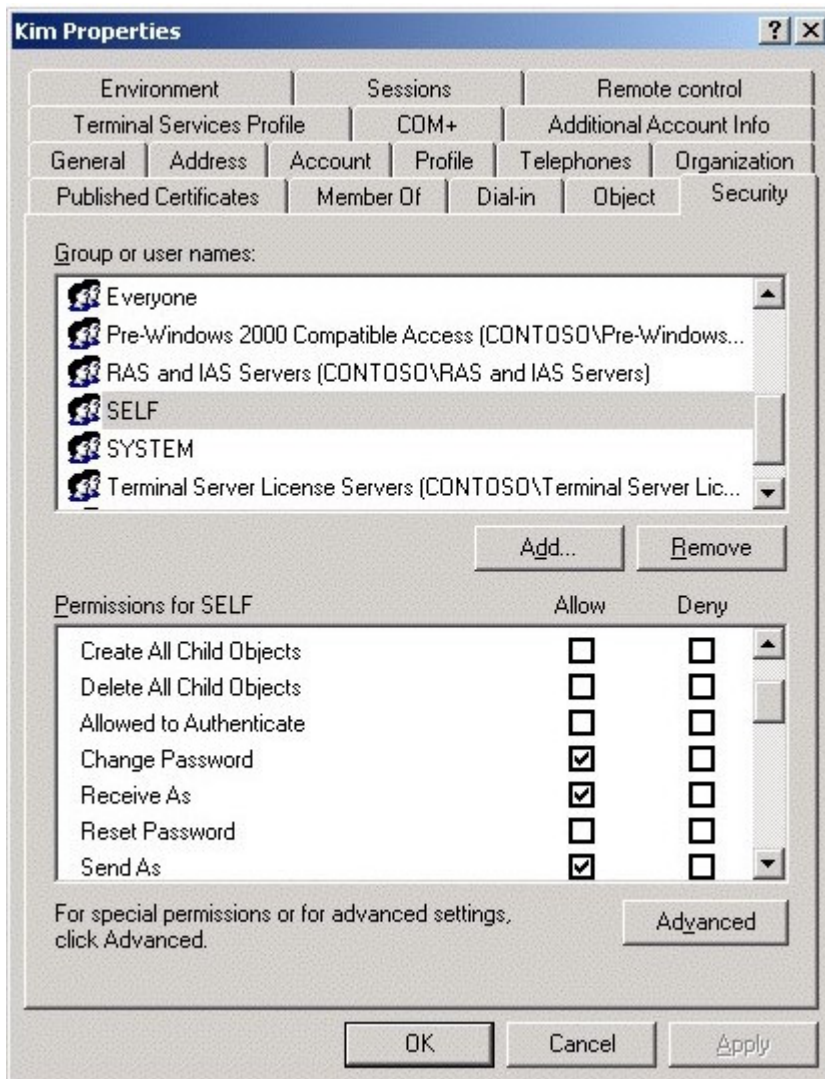
The company has a main office and three branch offices. Each office is configured as an Active Directory site. Each site contains domain controllers.

A domain user named Kim reports that she forgot her password. She works in one of the branch offices. A desktop support technician in the main office resets Kim's password, enables the User must change password at next logon option on Kim's user account, and then tells Kim the new password.

Kim attempts to log on by using her new password and reports that she cannot change the password at logon.

You investigate the problem. Kim's user account is not locked out, and it is not disabled. Permissions for the user account are shown in the exhibit. (Click the Exhibit button.) You need to ensure that Kim can log

on and change her password.
What should you do?



- A. Assign the SELF group the Allow - Reset Password permission for Kim's user account.
- B. Assign the SELF group the Allow - Allowed to Authenticate permission for Kim's user account.
- C. Assign the Everyone group the Allow - Allowed to Authenticate permission for Kim's user account.
- D. Enable the Let Everyone permissions apply to anonymous users security setting in the domain.
- E. Reset Kim's password on a domain controller in her branch office.

Answer: E

4. You are a security administrator for your company. The network consists of two Active Directory domains. These domains each belong to separate Active Directory forests. The domain named graphicdesigninstitute.com is used primarily to support company employees. The domain named fineartschool.net is used to support company customers. The functional level of all domains is Windows Server 2003 interim mode. A one-way external trust relationship exists in which the graphicdesigninstitute.com domain trusts the fineartschool.net domain.

A Windows Server 2003 computer named Server1 is a member of the fineartschool.net domain. Server1 provides customers access to a Microsoft SQL Server 2000 database. The user accounts used by

customers reside in the local account database on Server1. All of the customer user accounts belong to a local computer group named Customers. SQL Server is configured to use Windows Integrated authentication.

Your company has additional SQL Server 2000 databases that reside on three Windows Server 2003 computers. These computers are member servers in the graphicdesigninstitute.com domain. The company's written security policy states that customer user accounts must reside on computers in the fineartschool.net domain.

You need to plan a strategy for providing customers with access to the additional databases. You want to achieve this goal by using the minimum amount of administrative effort.

What should you do?

A.Create a new user account in the fineartschool.net Active Directory domain for each customer. Create a universal group in the fineartschool.net domain. Add the new customer domain user accounts as members of the new universal group. Assign this group permissions to access the databases.

B.Create a new user account in the fineartschool.net Active Directory domain for each customer. Create a global group in the fineartschool.net domain. Add the new customer domain user accounts as members of the new global group. Assign this group permissions to access the databases.

C.Create a new user account in the graphicdesigninstitute.com Active Directory domain for each customer. Create a global group in the fineartschool.net Active Directory domain. Assign the new global group permissions to access the databases.

D.Create a new user account in the graphicdesigninstitute.com Active Directory domain for each customer. Create a universal group in the fineartschool.net Active Directory domain. Assign the new universal group permissions to access the databases.

Answer: B

5.You are a security administrator for your company. The company has one main office and five branch offices. Network administrators work in the main office and each branch office. Network administrators in the main office frequently create scripts that automate common administrative tasks. You review each script to ensure it does not introduce security vulnerabilities. Scripts that do not introduce security vulnerabilities are considered approved. Occasionally, branch office administrators modify these scripts and distribute the modified scripts to other branch office administrators. Branch office administrators often report that they accidentally run a modified version of a script. You need to ensure that branch office administrators can verify which scripts are approved scripts. What should you do?

A.Maintain a list of the dates that the approved scripts were last modified. Instruct branch office administrators to verify the file modification date.

B.Digitally sign all approved scripts. Instruct branch office administrators to verify the signature before using a script.

C.Distribute all approved scripts to branch office administrators in an e-mail message.

D.Place all approved scripts on a file server in the main office. Assign all branch office administrators only the Allow - Read permission for the folder that contains the approved scripts. Instruct administrators to copy scripts from this file server.

Answer: B