

EXAMGOOD

QUESTION & ANSWER

Exam Good provides update free of charge in one year!

Accurate study guides
High passing rate!

<http://www.examgood.com>

Exam : **70-415**

Title : Implementing a Desktop
Infrastructure

Version : Demo

1. Casos de Estudio

Testlet 1

Case Study 1

Proseware Inc.

The following testlet will present a Case Study followed by [count] multiple choice question(s), [count] create a tree question(s), [count] build list and reorder question(s) and [count] drop and connect (s). You will have [count] minutes to complete the testlet.

For help on how to answer the questions, click the Instructions button on the screen.

Overview

Proseware, Inc. is an independent software vendor. The company has a main office and two branch offices. The main office is located in New York. The branch offices are located in London and Moscow.

Existing Environment

The New York office and the London office each contain the following servers that run Windows Server 2008 R2:

- One Windows Deployment Services (WDS) server
- One Remote Desktop Session Host (RD Session Host) server

Each office contains client computers that run Windows XP. The London office and the New York office connect to each other by using a high-speed WAN link. The Moscow office and the New York office connect to each other by using a low-speed, high-latency WAN link. The network connection between the Moscow office and the New York office frequently fails.

Requirements

Planned Changes The company plans to implement the following changes:

- Migrate all of the client computers to Windows 8.
- Deploy new applications named App1, App2, and App3.
- Deploy a Virtual Desktop Infrastructure (VDI) in the New York office.
- Deploy a Windows Server Update Services (WSUS) infrastructure.

Migration Requirements

The company identifies the following migration requirements:

- Migrate the client computers to Windows 8 by using the Microsoft Deployment Toolkit (MDT).
- Replace the client computers in the New York office. Migrate the user settings during the migration to the new hardware.
- Ensure that the client computers in the London office that are not PXE-capable can download images from WDS.
- Reformat the existing disks in the London office during the migration to Windows 8.
- Avoid using the WAN link between the Moscow and New York offices whenever possible.
- Avoid deploying any servers to the Moscow office.

Virtual Desktop Infrastructure VDI Requirements

The company identifies the following VDI requirements:

- Automatically provision new virtual desktops based on a virtual desktop template. The new virtual desktops will run Windows 8.
- Automatically discard any user changes to the new virtual desktops when the users log off.
- Deploy a 3D graphics application named App1 to all of the new virtual desktops. App1 will require DirectX 11 support.
- Ensure that updates for App1 are applied to all of the new virtual desktops.

Application Requirements

The company identifies the following application requirements:

- In the New York office, deploy an application named App2 to the client computers that run Windows 8.
- Minimize the amount of resources used by App2 on the client computers.
- In the London office, publish an application named App3 to the Work Resources (RADC) area of the Windows 8 Apps screen.

Security Requirements

The company identifies the following security requirements:

- Ensure that updates for the New York, London, and Moscow offices can be approved only by the administrators in the New York office.
- Ensure that the users in the New York office can use only classes of USB devices that are approved by the IT department.
- Configure the replication of updates between the update servers in the New York and London offices.

You need to recommend a virtual desktop solution that meets the VDI requirements.

What should you recommend?

- A. managed pooled virtual desktop collections
- B. unmanaged pooled virtual desktop collections
- C. managed personal virtual desktop collections
- D. unmanaged personal virtual desktop collections

Answer: A

Explanation:

Virtual Desktop Collection

There are two types of virtual desktop collections available: personal and pooled. You have the option to let Remote Desktop Services automatically manage pooled virtual desktops in a collection, or you can manually manage them. We will concentrate on automatically managed pooled virtual desktop collections.

A managed pooled virtual desktop collection offers the following capabilities:

Automatically create pooled virtual desktops based on a virtual desktop template.

Automatically install security updates and applications based on a virtual desktop template.

Live migration with local caching.

User profile disk support. A user profile disk stores user profile information in a separate virtual hard disk so that user profile settings are persistent across pooled virtual desktops.

With either managed or unmanaged, the administrator can configure the pool to store the user profiles on User Profile disks separate from the machines.

<http://blogs.technet.com/b/canitpro/archive/2013/04/25/step-by-step-deploying-virtual-desktops-with-windows-server-2012.aspx>

Virtual Machine-based desktop Deployment is of two types:

Personal Virtual Desktop Collection - Administrators manually assign virtual desktops to the users.

Pooled Virtual Desktop Collection - Administrators deploy virtual desktops and users are randomly assigned virtual desktops. At log off virtual desktops are generally rolled back (rollback is optional).

Creating a Pooled Virtual Desktop Collection

There are two types of Pooled Virtual desktop Collections:

Pooled Managed The Virtual desktop machine is created using the Sysprep Template of a virtual machine. We can recreate the virtual desktops from this image at will.

Pooled Unmanaged We can add the existing virtual machine to this virtual desktop collection from Hyper V pool.

With either option, the administrator can configure the pool to store the user profiles on User Profile disks separate from the machines.

<http://blogs.technet.com/b/askperf/archive/2012/10/31/windows-8-windows-server-2012-pooled-virtual-desktop-infrastructure.aspx>

 Note

If a user disconnects from a virtual machine in a virtual desktop pool, when the user reconnects to the virtual desktop pool, the user will be connected to the same virtual machine in a virtual desktop pool. A virtual machine in a virtual desktop pool can be configured to be automatically restored to its original state after the user logs off. Any changes that a user made while logged on are lost. For more information, see <http://go.microsoft.com/fwlink/?LinkId=143453>.

<http://technet.microsoft.com/en-us/library/ee216741.aspx>

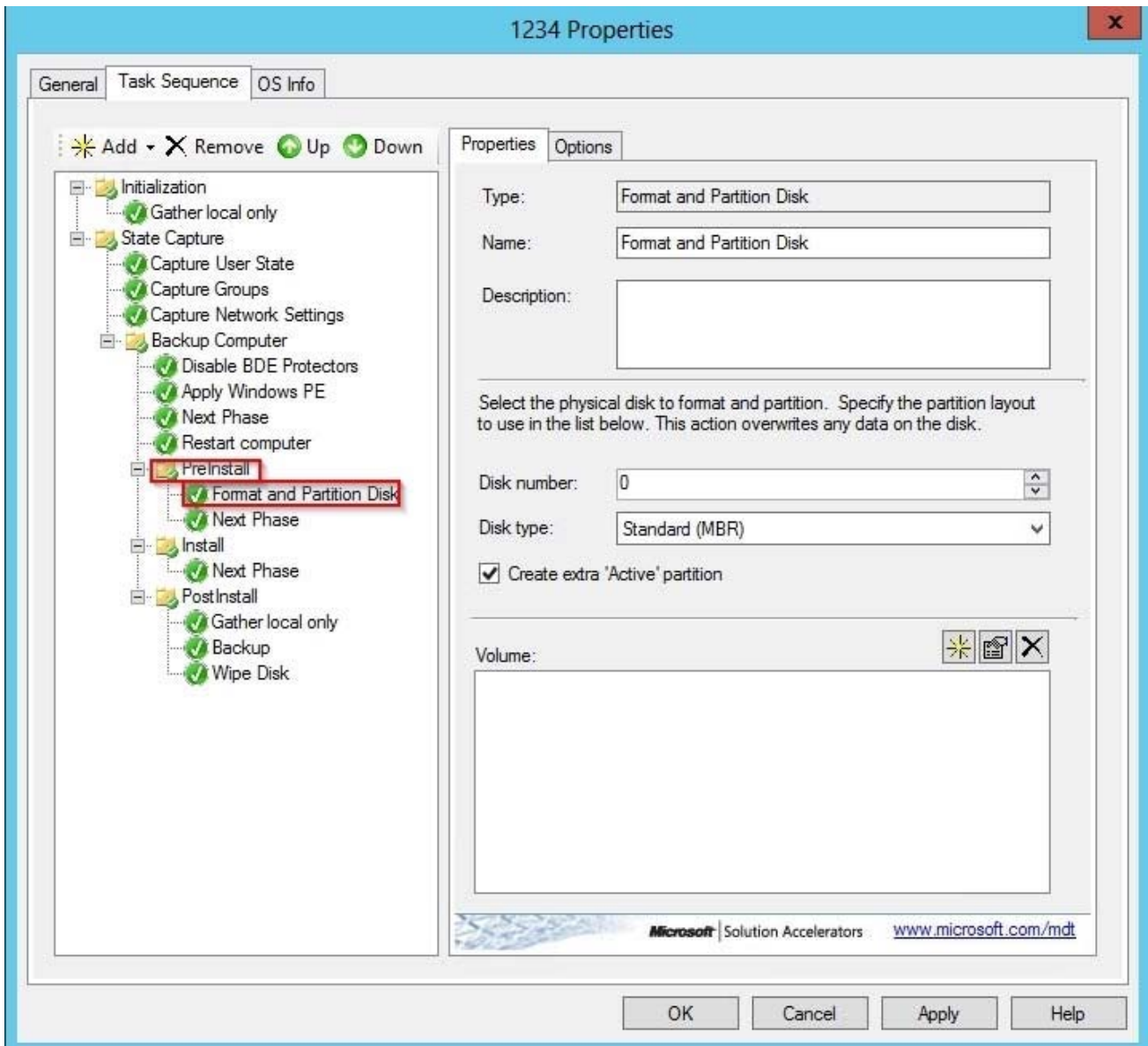
2. You need to configure a Deployment Workbench task sequence that meets the migration requirements of the London office.

Which task group should you edit?

- A. Preinstall
- B. State Restore
- C. Postinstall
- D. Capture the reference machine

Answer: A

Explanation:



3. You need to recommend a solution for updating App1. The solution must meet the VDI requirements. What should you recommend?

- A. Create a new virtual machine from the template file, apply the patch, and create a snapshot of the virtual machine.
- B. Mount the virtual machine template on a physical host and configure the template to be bootable. Apply the patch and run `dism.exe`.
- C. Create a new virtual machine from the template file, apply the patch, and run `sysprep.exe`.
- D. Mount the virtual machine template on a physical host and configure the template to be bootable. Apply the patch and run `sysprep.exe`.

Answer: C

Explanation:

Ensure that updates for App1 are applied to all of the new virtual desktops.

Rolling Out Updates to a Pooled Virtual Desktop Collection

A Master or Gold VM is formally referred to as “virtual desktop template” in the WS2012 Server Manager

UI console and the cmdlets in Remote Desktop Services module for Windows PowerShell. It is an input to the managed virtual desktop collection creation process that allows an admin to manage a virtual desktop collection. The Master VM is created and managed by the admin and it specifies the hardware properties and software contents of all the automatically created VMs in that managed virtual desktop collection. For example, if the master VM is assigned 2GB of RAM, then each of the automatically created VMs in the managed virtual desktop collection will be assigned 2GB RAM.

In this section, I will describe the various supported options and requirements for the Master VM.

Virtual Hard Disk The Master VM can only have one virtual hard disk (VHD) attached to it; more than one VHD attached to the Master VM is not supported.

The VHD attached to the Master VM must have either a Windows 7 SP1 or Windows 8 image insysprep generalized state.

A diff disk chain attached to the Master VM as its VHD is supported. Although the VHD can have more than one logical partition defined in it, it can have only one Windows OS image installed in it.

<http://blogs.msdn.com/b/rds/archive/2012/10/29/single-image-management-for-virtual-desktop-collection-in-windows-server-2012.aspx>

4. You need to prepare a virtual machine template that meets the VDI requirements.

What should you do?

- A. Run dism.exe and specify the /image parameter.
- B. Run dism.exe and specify the /export-image parameter.
- C. Run sysprep.exe and specify the /audit parameter.
- D. Run sysprep.exe and specify the /generalize parameter.

Answer: D

Explanation:

1. Virtual Hard Disk

- a. The Master VM can only have one virtual hard disk (VHD) attached to it; more than one VHD attached to the Master VM is not supported.
- b. The VHD attached to the Master VM must have either a Windows 7 SP1 or Windows 8 image in **sysprep** generalized state.
- c. A diff disk chain attached to the Master VM as its VHD is supported.
- d. Although the VHD can have more than one logical partition defined in it, it can have only one Windows OS image installed in it.

5. You need to deploy Windows 8 to the client computers in the Moscow office. The solution must meet the migration requirements.

What should you do first?

- A. From the Windows Deployment Services console, add a boot image.
- B. From the Windows Deployment Services console, add an install image.
- C. From the Deployment Workbench, select New Media.
- D. From the Deployment Workbench, select New Linked Deployment Share

Answer: C

Explanation:

The assumption is we only want to use the WAN link when absolutely required. If we create a Linked Deployment Share, all selected data would be replicated to Moscow from New York. By managing the

Task Sequence/Share locally in Moscow with no link to New York, you're only downloading the media and software one time.

Solution: Use MDT to create a bootable image for a DVD or external drive.

Step 1: Create selection profiles.

Step 2: Create your media.

Step 3: Update your media.

Step 4: Prepare your media.

Step 5: Use your media on the client machine.

Optional: Customize or automate your media.