

EXAMGOOD

QUESTION & ANSWER

Exam Good provides update free of charge in one year!

Accurate study guides
High passing rate!

<http://www.examgood.com>

Exam : ICDL-Net

Title : The ICDL L4 net exam

Version : DEMO

1. A search engine is a program

- A. that helps you to find information located on the internet
- B. that can be used to find errors in the HTML code for a web page.
- C. that is used to find the web sites you have most recently visited.
- D. on the Internet that locates all users logged onto a web site.

Answer: A

2. The main purpose of a firewall is to:

- A. prevent unauthorized users from gaining access to a network
- B. protect network servers from the risk of fire.
- C. prevent employees from accessing the Internet during work hours.
- D. prevent network users from sending and receiving personal e-mail.

Answer: A

3. Which one of the following statements about online credit card transactions is true?

- A. This globe symbol means a site is secure for entering credit card details.
- B. You should only enter credit card details into a form on a secure web site
- C. Your credit card statement may not include extra costs such as shipping.
- D. E-mail is the most secure way to send your credit card details to a website.

Answer: B

4. Which one of these statements about digital signatures is true?

A digital signature:

- A. Automatically encrypts the contents of an e-mail.
- B. Is a scanned image of your real signature.
- C. Is used to verify the identity of the sender of a message
- D. Is used to add a personal touch to e-mail messages.

Answer: C

5. An Internet tool that enables you to quickly find information on the Web is called:

- A. a Uniform Resource Locator.
- B. a Search Engine.
- C. a Find Wizard.
- D. Online Help.

Answer: B

6. The World Wide Web is:

- A. A huge collection of linked files held on computers all over the world
- B. a huge wide network of telephone cables and related equipment.
- C. a network of computers and cables that connect e-mail users all around the world.
- D. a global netowrk of communication satellites.

Answer: A

7. Which two of these statements about e-mail are true?

- A. You must send and receive e-mail on separate telephone lines.
- B. E-mail stands for Electronic Mail.
- C. The cost of sending e-mail depends on where the recipient lives.
- D. You can only send or receive e-mail offline.
- E. The distance over which e-mail is sent does not significantly affect the speed of delivery.

Answer: BE

8. Which two of these statements regarding the risk of transmitting viruses via e-mail are true?

- A. Viruses can only be transmitted via an e-mail attachment.
- B. A virus can spread via e-mail by mailing itself to everyone in a victim's address book
- C. Viruses are only spread via unsolicited mail.
- D. You should not open e-mail if it has a suspicious subject line
- E. You are more at risk from viruses if you use Web based e-mail.

Answer: BD

9. Which one of these statements about e-mail is true?

- A. You can only access one e-mail account at any time.
- B. Each user can only access their e-mail account from a single PC.
- C. You need a user name and password to access your e-mail
- D. Email accounts on a single PC share the same folders.

Answer: C

10. Which one of these statements is true?

- A. It is not possible to encrypt the content of e-mail message.
- B. Encryption prevents unauthorised users from reading data

- C. You can't send encrypted data out over the Internet.
- D. Encryption converts data so that it can be understood.

Answer: B

11. Which two of these statements about encryption are true?

- A. An encryption key is used to compress documents that you wish to store safely.
- B. Encryption prevents unauthorised users from reading your data
- C. Encryption converts data so that it cannot be understood
- D. You can't encrypt your e-mail messages.
- E. Encryption can only be used to encrypt text files.

Answer: BC

12. Which two of the following statements, about organising your e-mail within most popular e-mail applications, are true?

- A. You need to create folders before you can send or receive e-mail.
- B. You must read e-mail before you can organize it into folders
- C. You can use cut-and-paste to move mail to different folders.
- D. You must open an e-mail before you can duplicate it.
- E. E-mail messages can be sorted alphabetically inside a folder

Answer: BE

13. Which one of these statements is false?

- A. The content of web pages that you view while using a browser is lost from memory after the computer is shut down.
- B. Web browsers are software applications that are used to visit Web pages in various locations.
- C. Browsers contain hypertext links to different documents and sites on the Web.
- D. A web browser is a site where you can search for information on the web

Answer: D

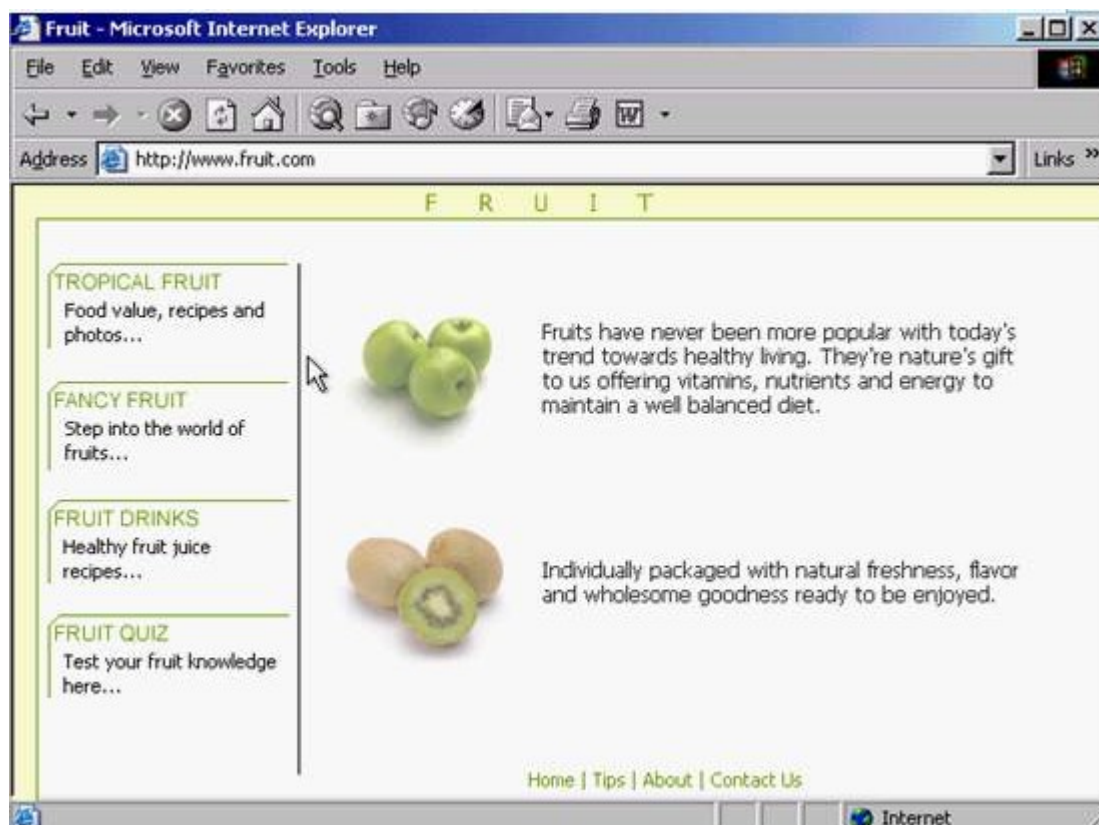
14.Drop

<input type="text"/>	The set of rules used for transferring files on the World Wide Web.
<input type="text"/>	The unique address for a web page.
<input type="text"/>	A clickable item in a web page that connects to another web page.
<input type="text"/>	A company that enables individuals to connect their PCs to the Internet.
<input type="text"/>	A set of rules frequently used to transfer web pages to a host server on the Internet.

Answer:

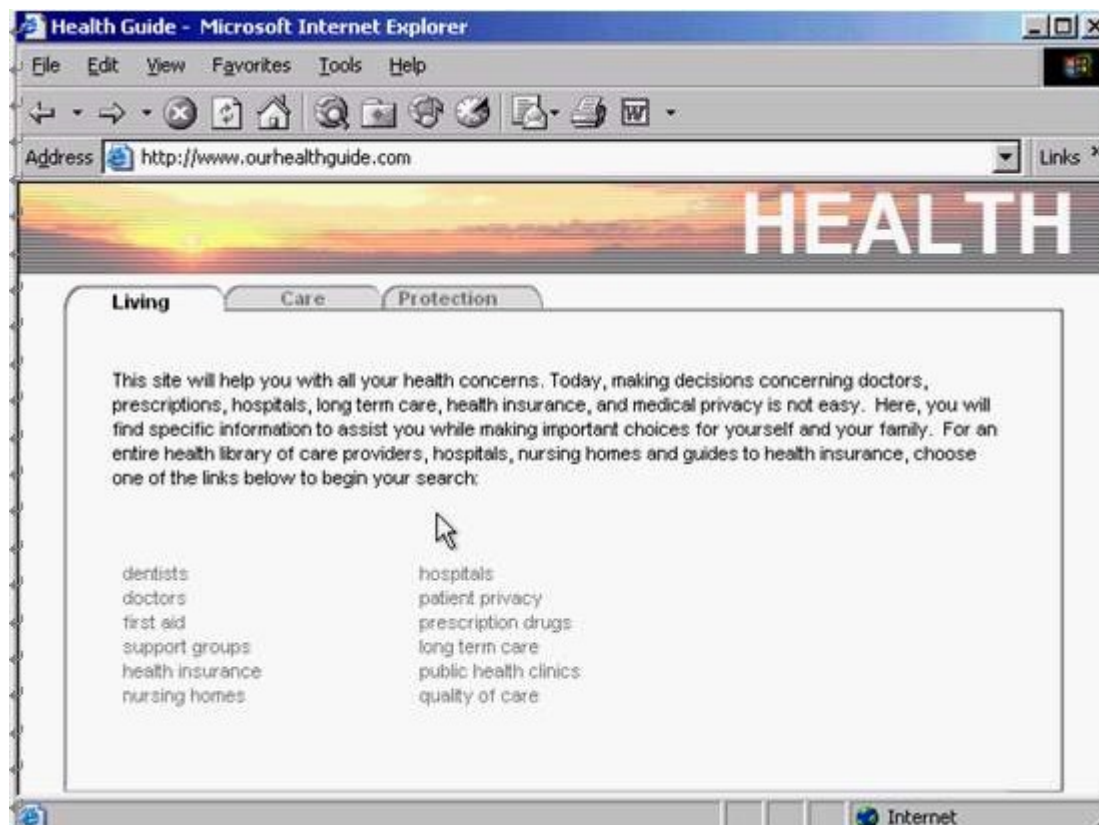
<input type="button" value="FTP"/>	The set of rules used for transferring files on the World Wide Web.
<input type="button" value="URL"/>	The unique address for a web page.
<input type="button" value="Hyperlink"/>	A clickable item in a web page that connects to another web page.
<input type="button" value="ISP"/>	A company that enables individuals to connect their PCs to the Internet.
<input type="button" value="HTTP"/>	A set of rules frequently used to transfer web pages to a host server on the Internet.

15. Make this page <http://www.fruit.com> your browser's new Home Page. Do not change any other setting.



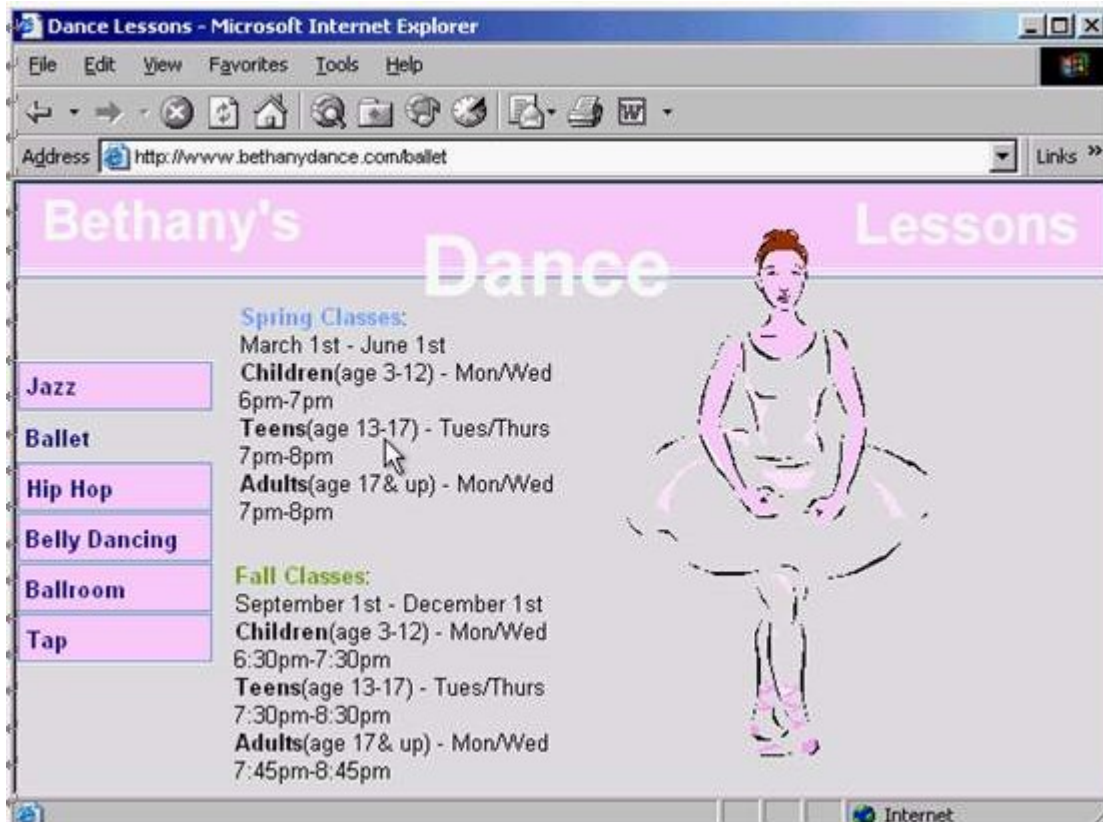
Answer: Tools -> internet options -> click on use current -> ok

16. Use Internet Explorer Help to access information on History lists.



Answer: Help -> contents and index -> type History lists -> display

17.Hide the Standard Buttons toolbar of this web browser.



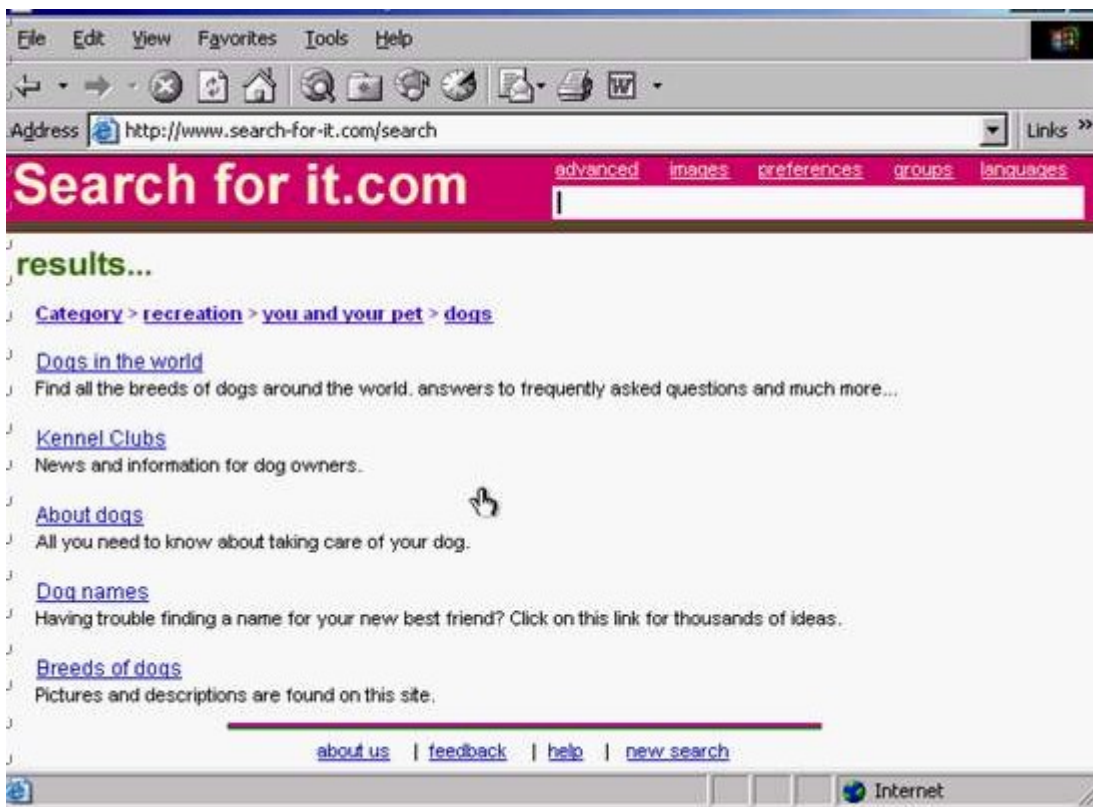
Answer: Right click on the menu bar -> select the standard buttons

18.Use the web address <http://www.macromedia.com> to navigate to the Macromedia website. Press Enter when you have finished.



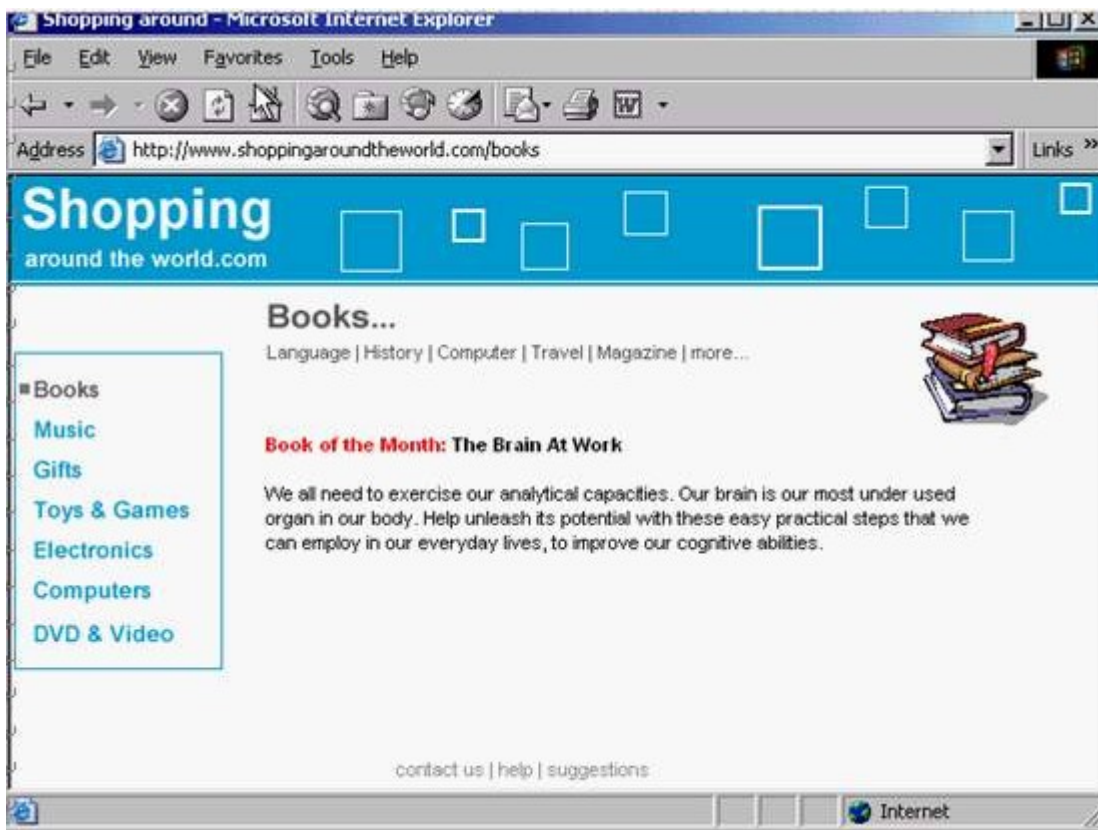
Answer: In the address box type <http://www.macromedia.com> -> press enter from the keyboard

19. Use these results to navigate to the Kennel Clubs web site.



Answer: Click on the Kennel Clubs hyperlink

20. Without changing its name, add this web page to your favorites.



Answer: Favorites -> add to favorites -> ok